

4 December 2024

KORSNÄS REE INFERRED RESOURCE ESTIMATE

Prospech Limited (ASX: PRS, **Prospech** or **the Company**) is pleased to announce an initial JORC Code 2012 Inferred Mineral Resource Estimate (**MRE**) derived from the Company's 2024 drilling campaign and the ongoing program of sampling and assaying of the Korsnäs drill core from historic holes completed in the 1950s, 60s and early 70s.

An initial Inferred MRE at the selected lower cut-off grade of 0.5% TREO is:

INFERRED MINERAL RESOURCE ESTIMATE

7.1Mt @ 1.08% TREO - lower cut-off grade of 0.5% TREO

This initial estimate is derived from the combination of 46 zones (refer Figure 4) which, with further drilling, is expected to be consolidated into fewer zones resulting in increased resource tonnage.

Table 1. Korsnäs Inferred Mineral Resource Estimate at various TREO cut-offs.

Cut-Off (ppm)	Resource (Mt)	TREO	Nd2O3	Pr6O11	Tb4O7	Dy2O3
		ppm	ppm	ppm	ppm	ppm
10,000	2,258,877	19,358	3,130	957	12	48
9,000	2,861,077	17,286	2,855	859	12	48
8,000	3,387,422	15,917	2,684	798	12	47
7,000	4,236,651	14,237	2,459	720	12	47
6,000	5,294,482	12,686	2,237	647	12	45
5,000	7,094,979	10,851	1,955	558	11	41
4,000	10,316,895	8,852	1,634	459	9	36
3,000	15,068,598	7,148	1,341	373	8	31
2,000	23,042,002	5,520	1,047	289	7	26
1,000	38,157,086	3,911	744	204	5	19

In addition to this Inferred MRE, adjacent to and along strike from the Inferred MRE, a grade-tonnage estimate, classified as an Exploration Target until additional drilling and metallurgical test work which is currently underway confirms the likelihood of eventual economic extraction, is reported as follows:

ADDITIONAL EXPLORATION TARGET

10Mt to 12Mt @ 1.0% to 1.2 % TREO

The potential quantity and grade of the Exploration Target is conceptual in nature. There has been insufficient exploration (including metallurgical test work) to estimate a Mineral Resource and it is uncertain if further exploration will result in the estimation of a Mineral Resource.



Level 2, 66 Hunter Street, Sydney NSW 2000 Australia



Prospech Managing Director, Jason Beckton, commented:

"This Inferred MRE at Korsnäs is a fantastic start and represents the EU's newest REE resource. We are now focused on improving the quality and quantity of the resource, metallurgical information, iterative economic review and initial mine permitting matters.

This Inferred MRE is based on 46 separate mineralised domains determined by data from the recent diamond core drilling completed by Prospech and more than 3,700 assay results from the drill core of 481 historical drill holes preserved by the Geological Survey of Finland, all of which confirm the presence of significant concentrations of rare earth elements.

The work that has gone into the calculation of the MRE will aid in the planning of future drill locations with the objective of connecting the mineralised domains and to support the Company's metallurgical test work.

With further assay results from the sampling of historic drill core still to be received, future drilling by Prospech and metallurgical test work results, we look forward to improving the quality and quantity of the reported Inferred MRE and to convert some Exploration Target tonnes to a JORC compliant resource estimate.

Beyond the reported Inferred MRE and Exploration Target, Prospech's surrounding tenements have not been fully explored. In addition, the Tailings Storage Facility and Lanthanide Concentrate Stockpile, both of which have already been comprehensively drilled and assayed by Prospech, we regard as 'low hanging fruit' which may form the foundation of a starter project.

These aspects of our Korsnäs project represent further upside to the steady development we have achieved to date."

Executive Summary

The Korsnäs lead mine, located on Finland's west coast near the Gulf of Bothnia, was operational from 1958 to 1972. During this period, 0.87 million tonnes of ore were processed on-site at a recovered grade of 3.6% lead (Pb).

Outokumpu Oy, the original mine operator, was aware that the Korsnäs orebody contained Rare Earth Elements (**REEs**). Although a REE concentrate was produced on-site, it was never sold and remains stockpiled at the mine.

Prospech, through its wholly owned Finnish subsidiary, retains exploration tenure over the Korsnäs mine site. The tenure features at least six sub-parallel geological structures up to 20 metres horizontal thickness rich in REEs. Prospech's exploratory efforts have focused on investigating these structures which are the subject of this resource estimate.

Location and Access

The Korsnäs REE project is located on Finland's west coast, near the Gulf of Bothnia (Figure 1). It is centred around a historic lead mine, situated 45 km southwest of Vaasa, 4 km northeast of Korsnäs and 171 km from the significant port of Kokkola. The main road between Vaasa and Korsnäs passes through the project area, which has access to grid power and communications.

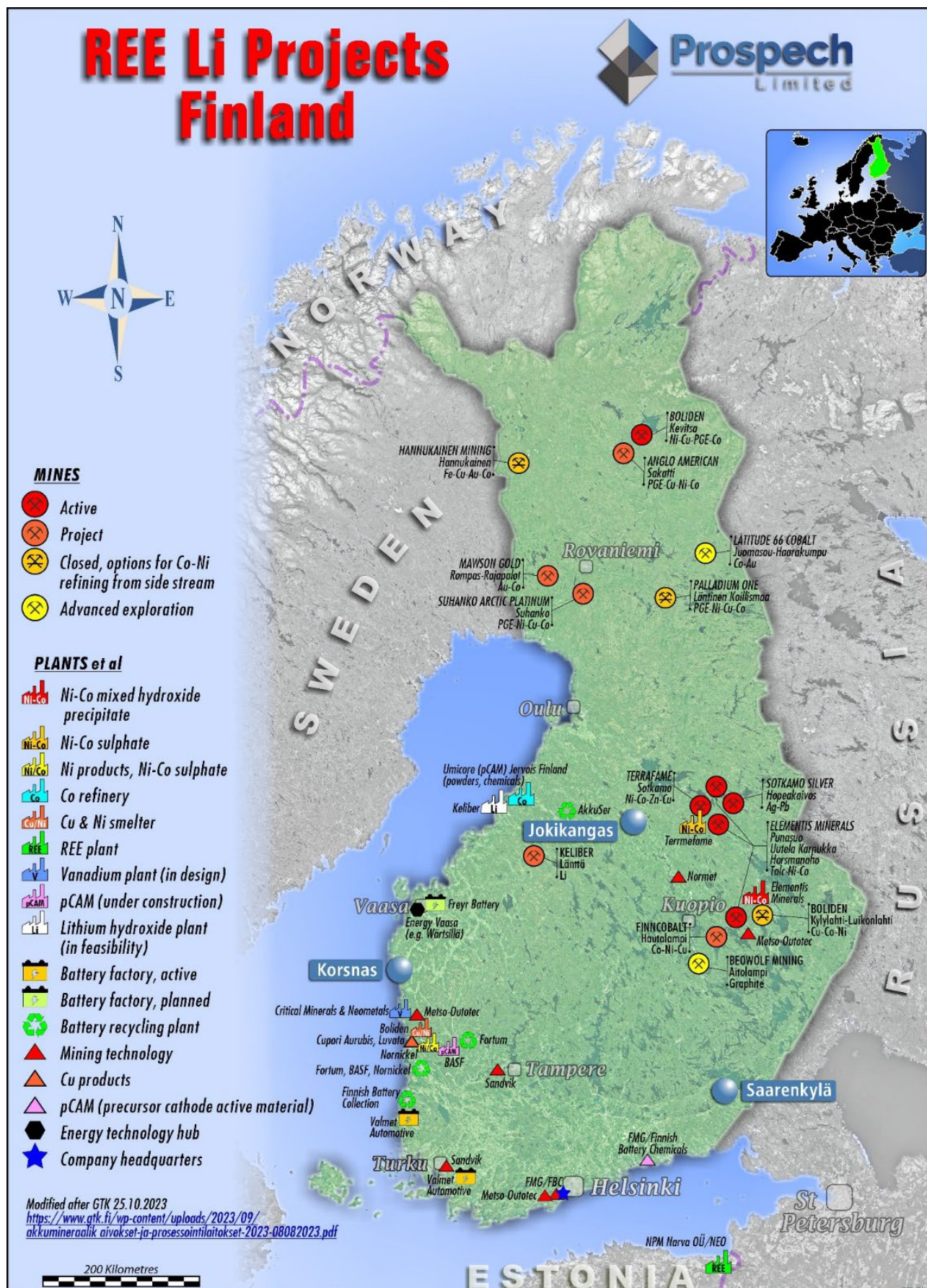


Figure 1. Korsnäs Project is located south of the Ostrobothnia Capital Vaasa where the potential battery manufacturing facility, Energy Vaasa industrial park, is being established.

Tenure

Tenement areas are reserved for exploration by Reservation Notifications, with priority going to the first applicant, followed by the granting of an Exploration Permit and then a Mining Permit approved by the Finnish mining authority, the Finnish Safety and Chemicals Agency (**TUKES**):



Tenure at Korsnäs comprises 4 tenements (Figure 2):

- ML2021:0019 Hagg¹ (182.32 Ha)
- VA2023:0040 Hägg 2² (185.55 Ha)
- VA2023:0083 Hägg 3² (167.15 Ha)
- VA2023:0093 Petalax² (2,995.37 Ha)

1. Granted by TUKES on 7 May 2024.

2. Reservation Notifications filed with TUKES for handling and providing priority for the granting of Exploration Permits.

The Mining Act (621/2011; Amendments up to 573/2023) (**Mining Act**) is the relevant legislation which governs exploration and mining activities in Finland.

Without the consent of the owner, the Mining Act prohibits the granting of an Exploration Permit within 150 metres of certain building structures (section 7 of the Mining Act). Hence the Exploration Permit exclusion zones (best shown as the 'bubbles' in the Petalax Reservation Notification tenement) in the map of the Korsnäs project tenements in Figure 2 below.

As previously announced (ASX announcement on 4 October 2023: Korsnäs Municipality Support Expands the Korsnäs Project), the Company has received consent of the Korsnäs Municipality to allow Prospech to conduct exploration activities on areas owned by the Korsnäs Municipality and within the 150 metre Exploration Permit exclusion zones.

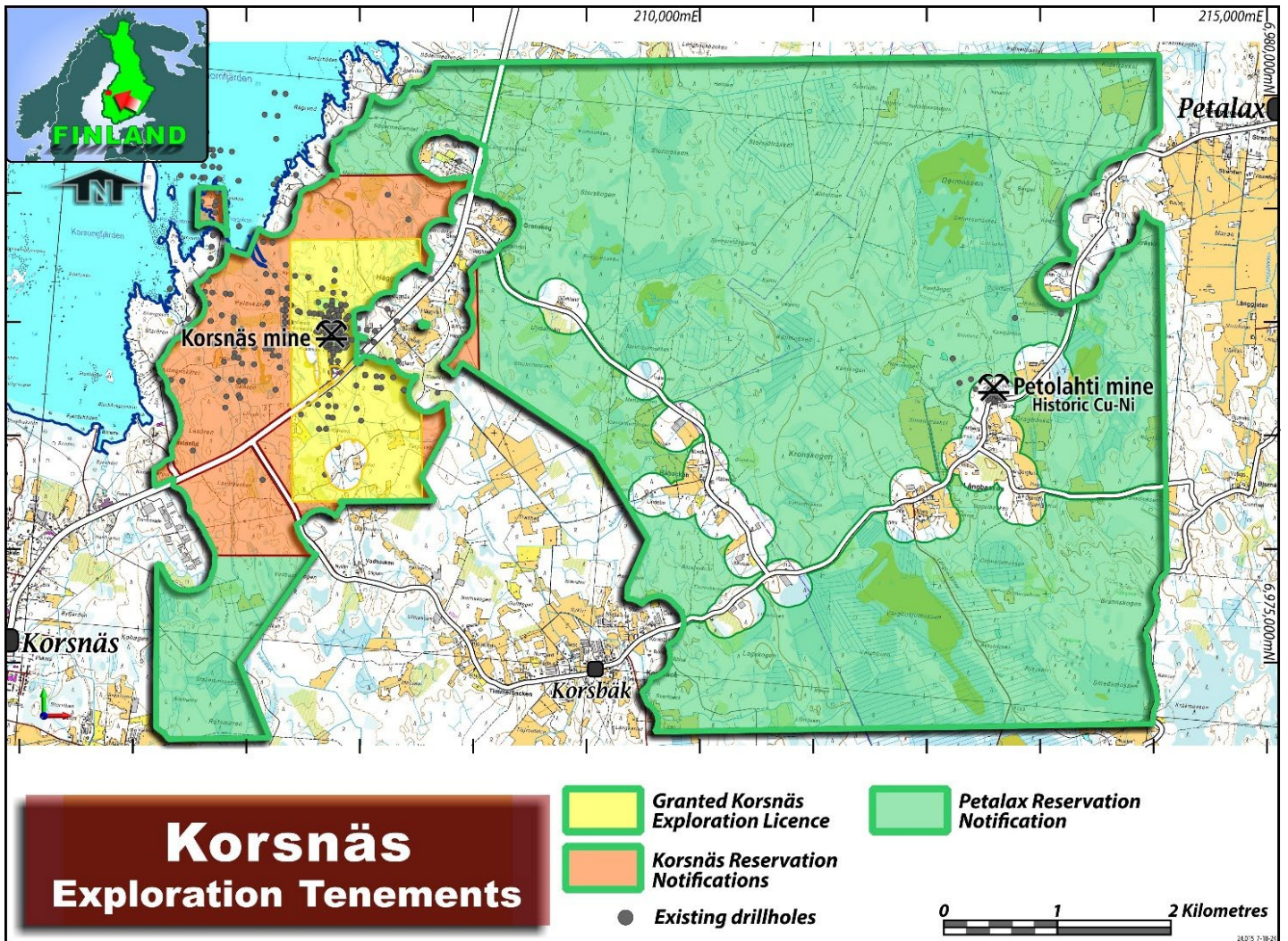


Figure 2. Korsnäs project tenement map showing ML2021:0019 Hagg (in yellow), VA2023:0040 Hagg 2 and VA2023:0083 Hagg 3 (in orange) and VA2023:0093 Petalax (in green).

The Mining Act does not prohibit the granting of a Mining Permit in these same areas. The Mining Act provides for the Government to grant a Mining Permit, known as a 'redemption permit for a mining area', over these same exclusion zones if the mining project is based on public need and the mining area meets the requirements laid down in the Mining Act (sections 19 and 20 of the Mining Act).

In summary, as demonstrated, exploration activities can be conducted within exclusion zones with the consent of the owner and mining activities can be conducted within exclusion zones in accordance with a redemption permit for a mining area.

Surveying and Topographic Control

Publicly available LIDAR data from Finnish Government sources was utilised for topographic control. The LIDAR topography closely matched the differential GPS surveys of drill collars, which were conducted by a licenced surveyor from Mitta Oy. Drill hole collars were laid out by Mitta Oy.

Diamond Core Drilling Data

Historic drilling

A total of 481 drill holes have been collated in a modern MS Access relational database. Total metreage included in the estimate is 51,814 metres and average depth of 108 metres.

Prospech estimates the value of the previously drilled diamond drill core, almost all of which is preserved, to be in excess of \$10 million.

Observed carbonatite zones were primarily sampled from BQ and AQ drill cores. Half-core or quarter-core samples were initially processed at GTK's Loppi facility and more recently at Palsatech Oy's facility in Kemi.

In total there are currently 3,709 assays records in the resource estimate database which were assayed by ALS in Outokumpu.

All geology data critical to mineralisation zone definition has been entered where available. No geological relogging was required and existing lithology codes were adopted.

Sampling and assaying historic drill core is ongoing. At report date, assay results from 3,709 samples have been reported with a further 681 samples in preparation and still to be reported. In due course, this Inferred MRE will be revised to reflect increased data density and confidence.

Modern era diamond drilling (2024)

In August/September 2024, drill testing (KR305 to KR310 continuing KR series from previous drilling) was conducted by Prospech with 6 drill holes for combined total of 1,032 metres. A total of 341 samples were analysed for various elements, including the lanthanide series REEs. Quarter-core sampling was completed to allow for sufficient modern core (half-core HQ) for metallurgical test work.

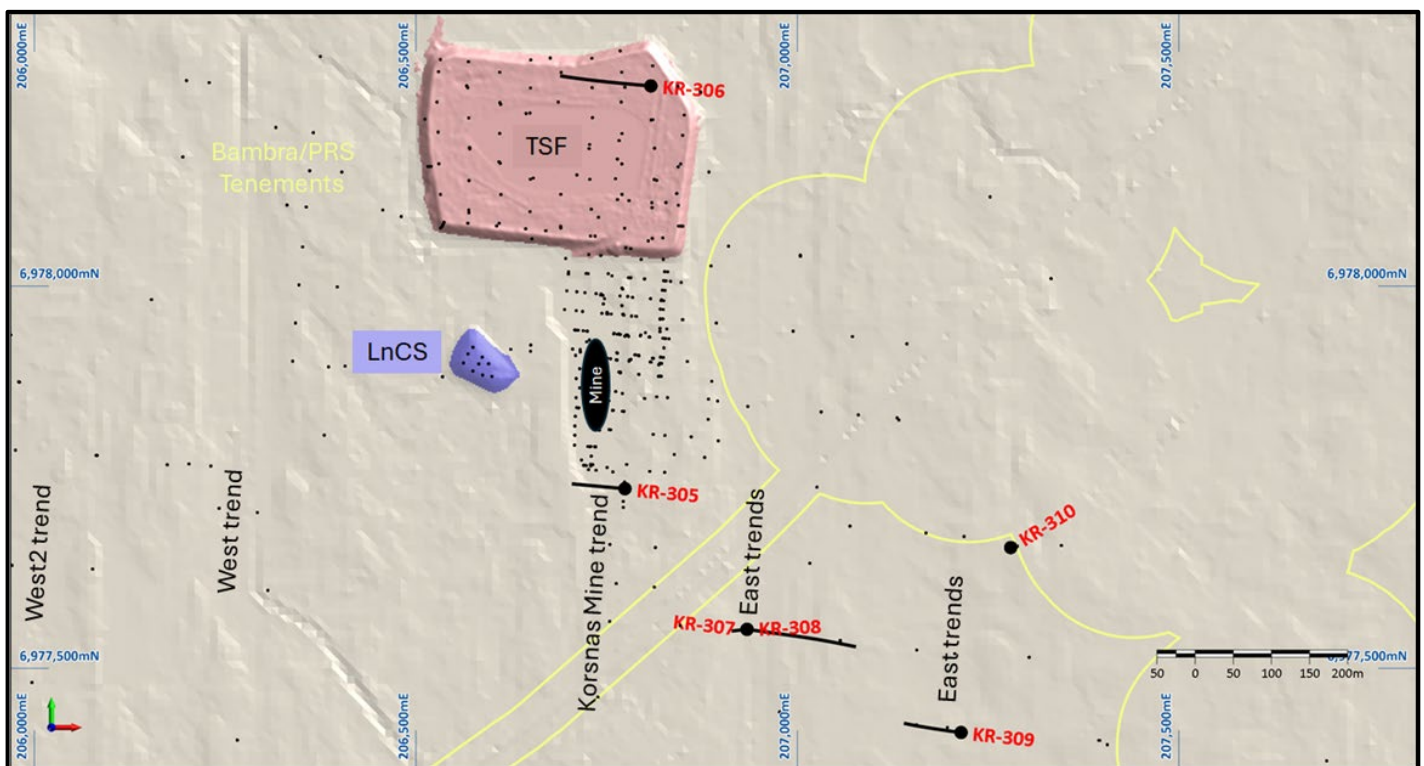


Figure 3. Location of 2024 drill collars has the dual focus of confirmation of previous grades and providing modern era material for ongoing metallurgical test work.
The Tailings Storage Facility (TSF) and Lanthanide Concentrate Stockpile (LnCS) are not included in the Inferred MRE.

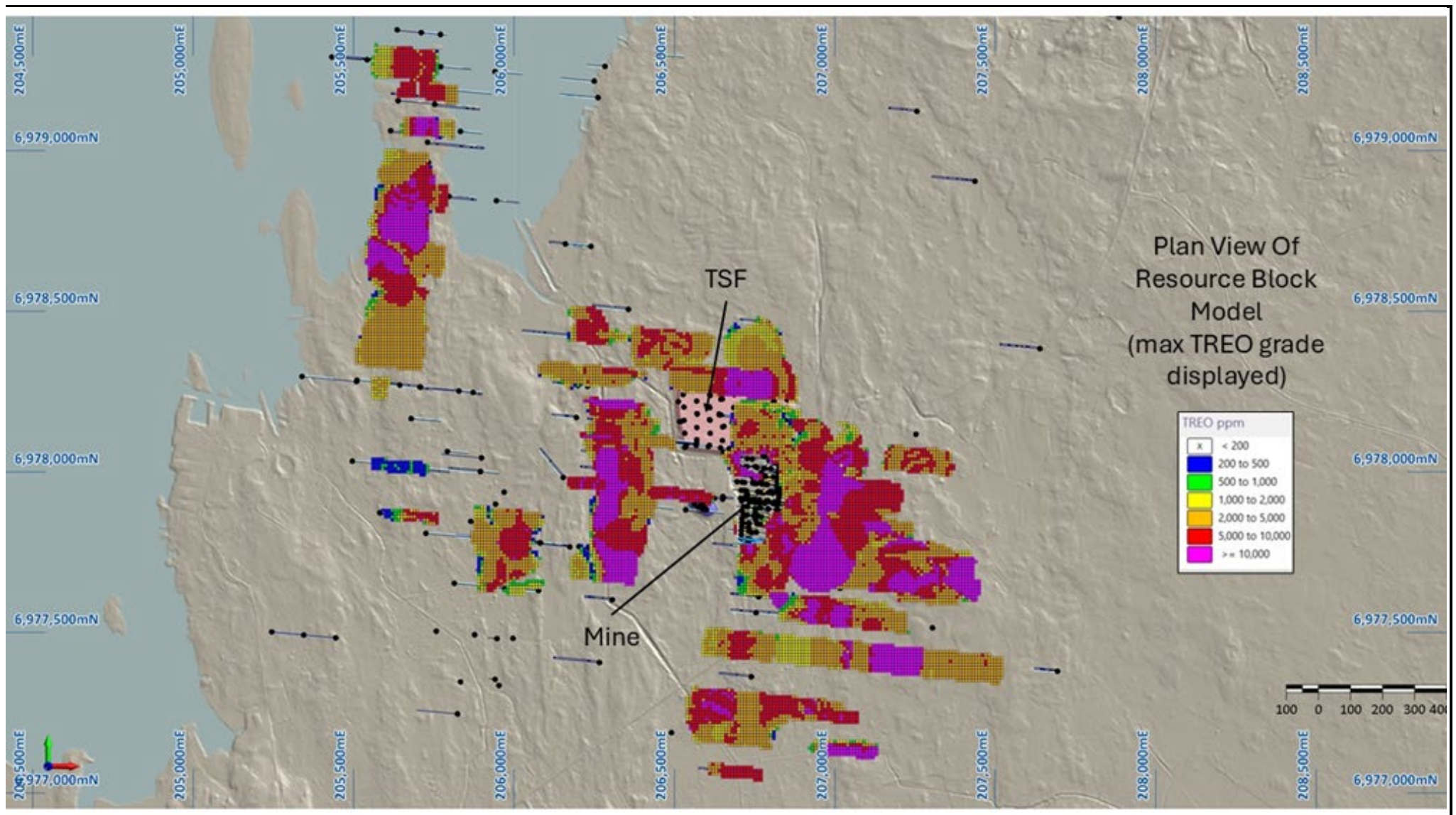


Figure 4. Drilling data in terms for assays informing the block model are all from recent sampling from 2023 onwards.

A total of 481 drill holes are in the database in terms of hard rock drilling (excludes the TSF and LnCS auger drilling).

Not all drill holes are included in the block model if too distance from nearby continuous intercepts.

It is expected a future estimate with additional drilling will allow more contiguous estimates of the overall tonnage of the parallel zones.

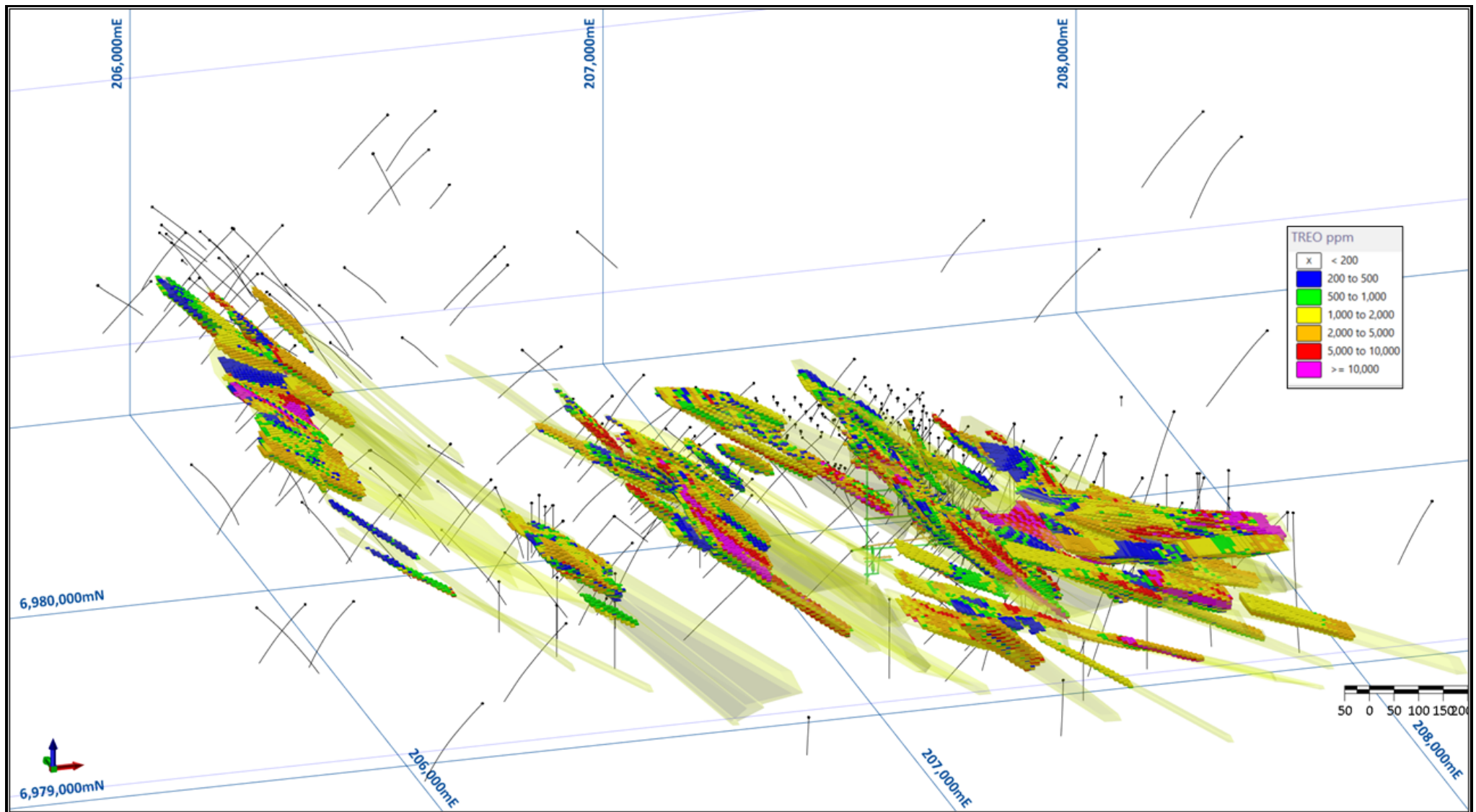


Figure 5. Oblique view to the NE to illustrate most of the modelled structures have not been populated by blocks as more drilling is required but also indicates significant future resource growth is probable. Most of the drill holes have been sampled and assayed since 2023 but drilled from the 1950s to the 1970s. Prospech's 2024 drill program was designed to spatially separate and to confirm high grade zones.

Sampling and Assaying

Samples were quarter cored HQ for the 2024 drilling campaign but also NQ and in some cases BQ for historical sampling. These samples were dispatched by road to the ALS laboratory in Outokumpu. The assay suite, including the ALS methods and detection limits, is detailed in Table 2.

ALS method ME-MS81h, which involves lithium borate fusion with ICP-MS analysis, is suitable for ore grade REEs. Additionally, method ME-ICP61 uses a four-acid digestion on a 0.25g sample, followed by ICP-AES analysis was used for other elements.

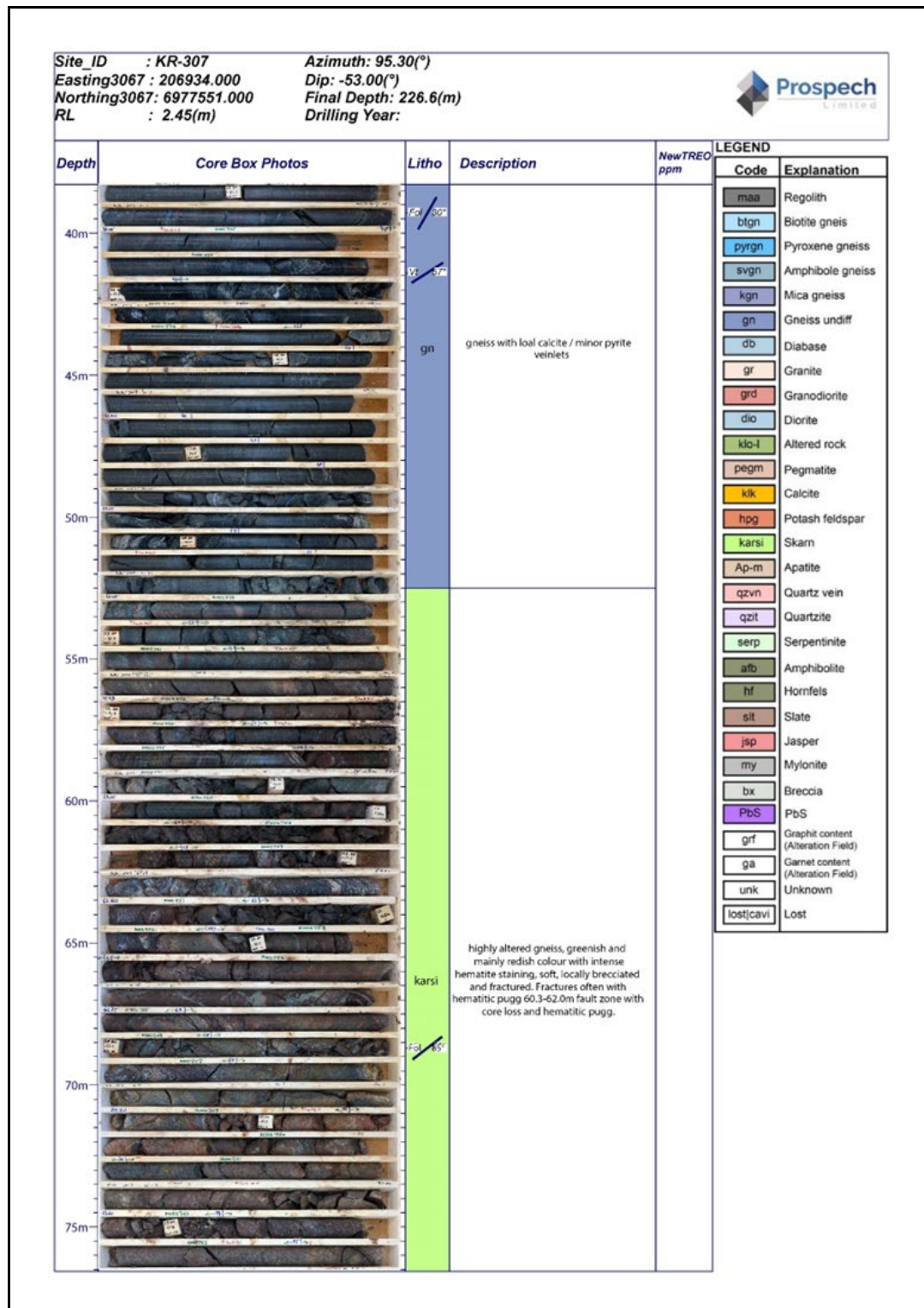


Figure 6. Core photographs are matched with geological logging for both historic and 2024 drill campaign.

Table 2. Analytical methods and detection limits.
Sample security involved bolted down box dispatch to ALS in Outokumpu.

ALS Method	Element	Units	Detection Limit	ALS Method	Element	Units	Detection Limit
ME-MS81h	Ce	ppm	3	ME-ICP61	Ag	ppm	0.5
ME-MS81h	Dy	ppm	0.3	ME-ICP61	Al	%	0.01
ME-MS81h	Er	ppm	0.2	ME-ICP61	As	ppm	5
ME-MS81h	Eu	ppm	0.2	ME-ICP61	Ba	ppm	10
ME-MS81h	Gd	ppm	0.3	ME-ICP61	Be	ppm	0.5
ME-MS81h	Hf	ppm	1	ME-ICP61	Bi	ppm	2
ME-MS81h	Ho	ppm	0.05	ME-ICP61	Ca	%	0.01
ME-MS81h	La	ppm	3	ME-ICP61	Cd	ppm	0.5
ME-MS81h	Lu	ppm	0.05	ME-ICP61	Co	ppm	1
ME-MS81h	Nb	ppm	1	ME-ICP61	Cr	ppm	1
ME-MS81h	Nd	ppm	0.5	ME-ICP61	Cu	ppm	1
ME-MS81h	Pr	ppm	0.2	ME-ICP61	Fe	%	0.01
ME-MS81h	Rb	ppm	1	ME-ICP61	Ga	ppm	10
ME-MS81h	Sm	ppm	0.2	ME-ICP61	K	%	0.01
ME-MS81h	Sn	ppm	5	ME-ICP61	La	ppm	10
ME-MS81h	Ta	ppm	0.5	ME-ICP61	Li	ppm	10
ME-MS81h	Tb	ppm	0.05	ME-ICP61	Mg	%	0.01
ME-MS81h	Th	ppm	0.3	ME-ICP61	Mn	ppm	5
ME-MS81h	Tm	ppm	0.05	ME-ICP61	Mo	ppm	1
ME-MS81h	U	ppm	0.3	ME-ICP61	Na	%	0.01
ME-MS81h	W	ppm	5	ME-ICP61	Ni	ppm	1
ME-MS81h	Y	ppm	3	ME-ICP61	P	ppm	10
ME-MS81h	Yb	ppm	0.2	ME-ICP61	Pb	ppm	2
ME-MS81h	Zr	ppm	10	ME-ICP61	S	%	0.01
				ME-ICP61	Sb	ppm	5
				ME-ICP61	Sc	ppm	1
				ME-ICP61	Sr	ppm	1
				ME-ICP61	Th	ppm	20
				ME-ICP61	Ti	%	0.01
				ME-ICP61	Tl	ppm	10
				ME-ICP61	U	ppm	10
				ME-ICP61	V	ppm	1
				ME-ICP61	W	ppm	10
				ME-ICP61	Zn	ppm	2

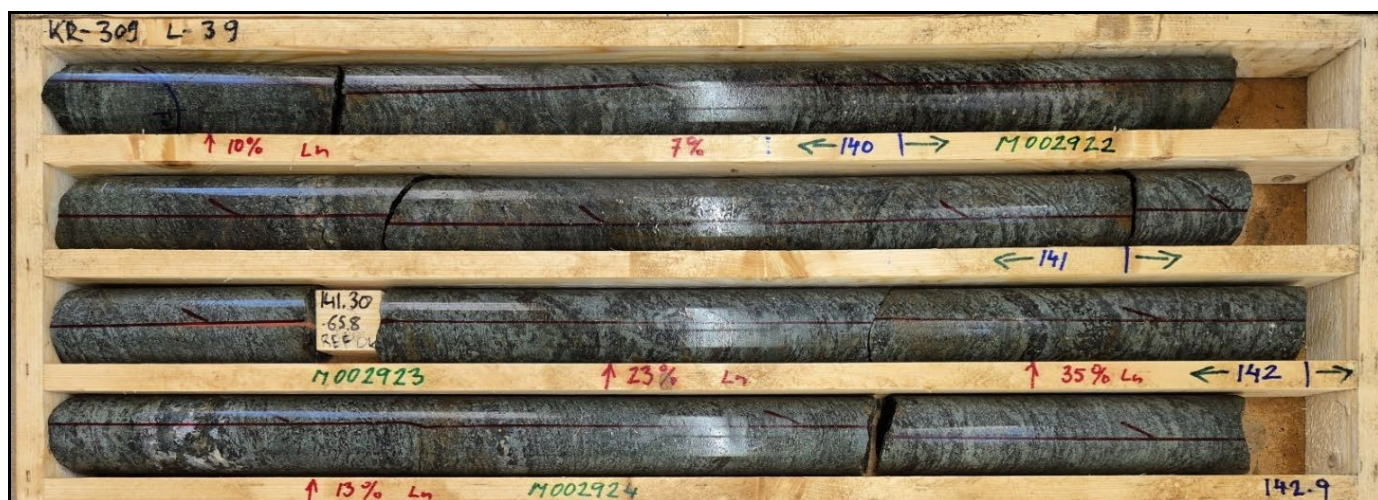


Figure 7. Sample series marked in green with orientation line from which structural information has been collected (314 in total from KR 305 to KR309).

Handheld TREO recordings are also shown to ensure sampling of non-obvious mineralised skarn away from obvious, white, carbonatite REE hosting veins.

Density

Calcite is the dominant gangue material in the mineralised assemblage and is commonly recognised as having a specific gravity of 2.71. The assumed density of 2.7, which does not take in to account metalliferous species rendering future resource specific gravity data likely higher in value, can be adjusted with further mineralisation characterisation work.

Metallurgical test work - Mineral characterisation

A shipment of test samples is prepared for dispatch to GTK Mintec and the Oulu Mining School, where metallurgical test work will be conducted under the European Commission's Rare Earth and Magnets Hub for a resilient Europe (**REMHub**) €16.0 million grant program.

Prospech, through its wholly owned subsidiary Bambra OY, is a partner in the REMHub program, an EU funded initiative designed, in part, to enhance the EU's access to rare earth elements and permanent magnets, which are essential for the green energy transition. The program focuses on improving supply security within the EU by enabling domestic exploration, mapping of REEs, and developing recycling and refurbishing technologies for permanent magnets.

Under the REMHub program, Bambra Oy has been awarded a €432,250 grant to support exploration activities at the Korsnäs project.

The metallurgical test work to be conducted at GTK Mintec and the Oulu Mining School is a critical component of this initiative, aiming to develop efficient processing techniques for REE-bearing materials sourced from the Korsnäs project.

By participating in the REMHub program, Prospech aligns with the EU's broader objectives under the REPowerEU plan, which seeks to accelerate the transition towards renewable energy and reduce dependence on external sources for critical raw materials.

Leading into the REMHub program, analysis of the following parameters was undertaken by Masters student Niel van de Kerkhof of KU Leuven *"Investigating the Origin of REE Mineralisation in the Korsnäs Pb-REE deposit, Finland: Magmatic Carbonatite Dykes or Hydrothermal Veins?"*.

Works included, but were not limited to:

- Petrographic analysis
- Chemical assay data analysis
- Petrography
- Mineral chemistry
- Whole rock chemistry
- Cold cathodoluminescence microscopy

In summary, the dominant mineral species hosting rare earth elements is Fluorapatite $\text{Ca}_5(\text{PO}_4)_3\text{F}$ with subordinate Bastnaesite $((\text{La}, \text{Ce}, \text{Y})\text{CO}_3\text{F})$ and Monazite $(\text{Pr}, \text{Ce}, \text{Nd}, \text{Th})\text{PO}_4$ and trace Allanite $(\text{Ce}, \text{Ca}, \text{Y}, \text{La})_2(\text{Al}, \text{Fe}_{+3})_3(\text{SiO}_4)_3(\text{OH})$. Future metallurgical work as detailed below will determine if, for example, a calcium fluorine product is possible apart from standard rare earth separation.

The carbonatites in the deposit are predominantly composed of calcite with accessory minerals such as pyrrhotite, pyrite, galena, Ba-orthoclase and REE-phases like fluorapatite with inclusions of bastnäsite and monazite, and britholite.

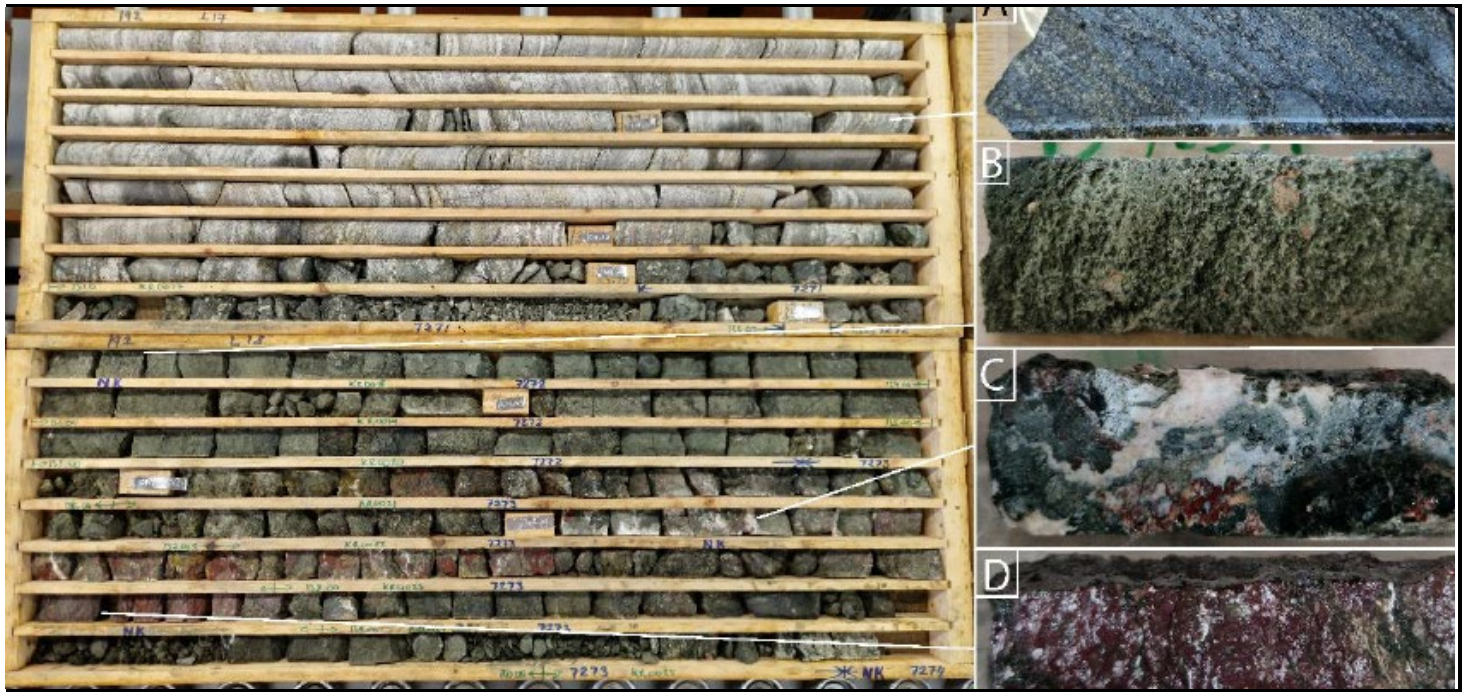


Figure 8. An example from Van de Kerkhof 2024, depicting A) Unaltered gneiss; B) Altered rock with chalcedony matrix and pink fluorapatite and monazite; C) Altered carbonatite; and D) Altered gneiss with calcite and iron oxides.



Figure 9. 10m of core with two carbonatite dikes with skarn on either side of the calcite carbonatites. Importantly these units are easily discerned/geologically modelled and well logged in the past in the case of historic core.

In detail, the REE-bearing phases in the Korsnäs REE-Pb deposit are REE-bearing fluorapatite, bastnäsite, monazite, allanite, britholite, and REE-bearing titanite and vesuvianite.

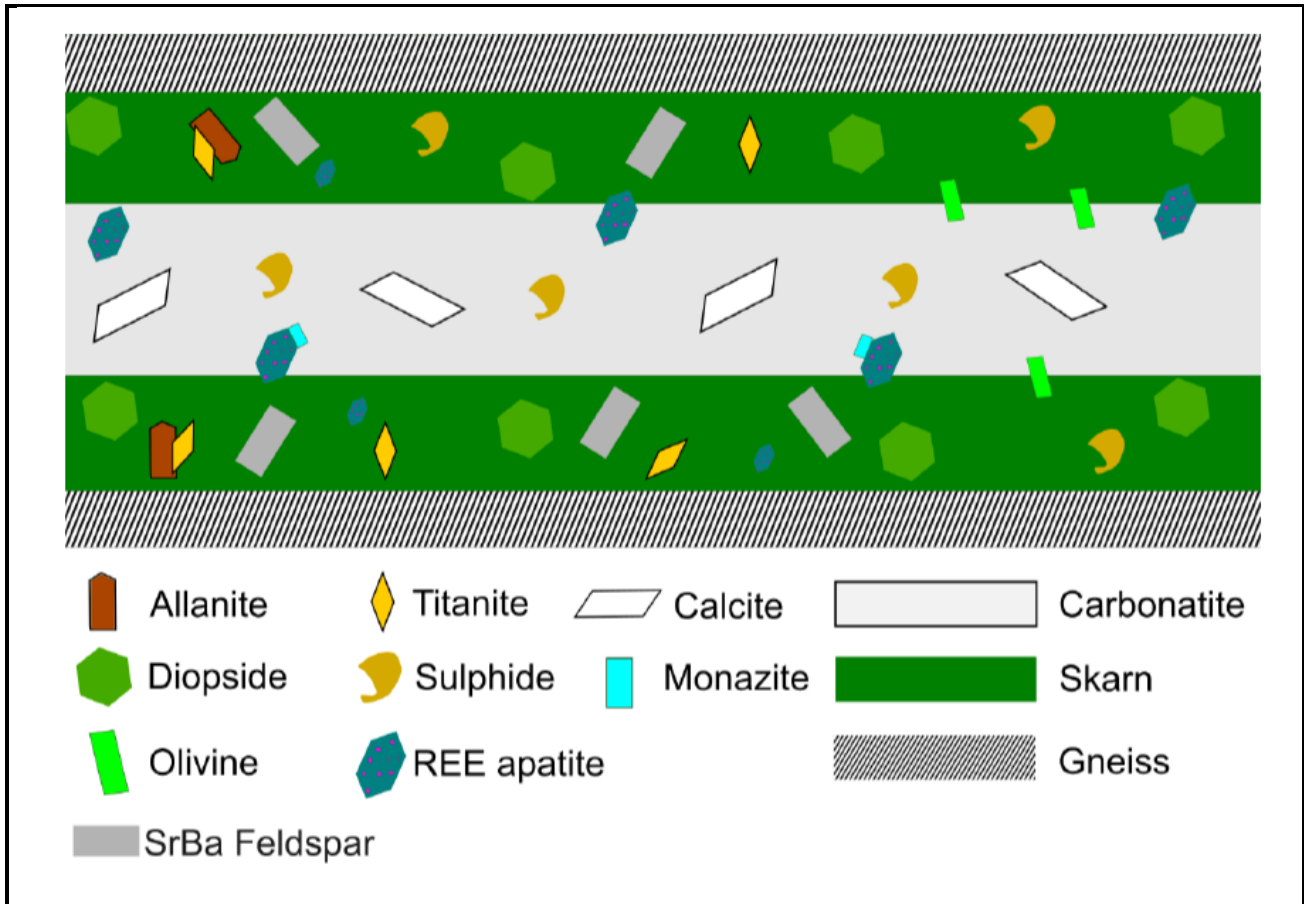


Figure 10. Idealised sketch of the Korsnäs carbonatite dykes and accompanying skarn.
Calcite interior with sulfides and REE apatite with inclusions of bastnasite and monazite (Van de Kerkhof 2024)

QA-QC

Duplicate quarter-core samples were inserted into the sample stream to check for variability. Internal ALS laboratory assays of blanks, standards, and duplicates did not reveal any significant issues.

A total of 14 duplicate pairs have been analysed from the recent KR305 to KR310 series of drilling. This was not possible from sampling of the historic core due to a requirement to leave behind significant core for future reference. All samples are equal weighting in terms of quarter-core of the exact same metreage and is blind to the ALS laboratory.

Table 3. Duplicates completed for KR 305 to KR310 in 2024 campaign indicate acceptable correlation.
Dataset will increase to allow statistical correlation in next resource estimate iteration.

Sample_ID	Sample_DUP	Hole_ID	From	To	Ce	Ce Dup	Dy	Dy Dup	Er	Er Dup	Eu	Eu Dup	Gd	Gd Dup	Hf	Hf Dup	Ho	Ho Dup	La	La Dup	Lu	Lu Dup	Nb	Nb Dup	Nd	Nd Dup	Pr	Pr Dup	Rb	Rb Dup	Sm	Sm Dup	Tb	Tb Dup	Tm	Tm Dup	Y	Y Dup	Yb	Yb Dup	La	La Dup
M002624	M002625	KR-305	37.00	38.00	89.0	89.0	4.4	4.5	2.0	1.8	1.5	1.2	6.2	5.8	5.0	4.0	0.7	0.7	44.0	43.0	0.2	0.2	10.0	11.0	38.7	37.7	10.0	9.8	116.0	120.0	7.7	6.8	0.8	0.9	0.2	0.2	21.0	21.0	1.8	1.4	40.0	30.0
M002649	M002650	KR-306	61.00	62.00	121.0	103.0	5.2	5.2	2.9	2.6	1.8	1.5	6.0	6.0	5.0	6.0	1.0	1.0	66.0	53.0	0.4	0.4	17.0	17.0	49.9	43.4	13.2	11.5	110.0	108.0	8.5	7.8	1.0	1.0	0.4	0.3	28.0	26.0	2.7	3.0	60.0	50.0
M002674	M002675	KR-306	116.30	116.80	712.0	661.0	12.3	11.7	3.7	4.3	16.0	15.7	31.4	28.9	5.0	4.0	1.7	1.8	335.0	310.0	0.2	0.3	24.0	23.0	379.0	357.0	93.9	87.5	102.0	91.0	53.9	54.9	3.3	2.7	0.4	0.4	51.0	48.0	2.3	2.1	260.0	230.0
M002699	M002700	KR-306	178.00	179.00	18150.0	14750.0	27.1	25.3	6.0	5.4	64.6	55.0	113.5	96.1	2.0	2.0	3.3	3.1	10850.0	8820.0	0.4	0.3	95.0	92.0	4920.0	3950.0	1775.0	1435.0	39.0	44.0	384.0	315.0	8.7	7.9	0.6	0.6	68.0	62.0	3.6	3.2	10000.0	8050.0
M002724	M002725	KR-306	246.50	247.50	69.0	74.0	4.2	3.5	1.6	1.4	1.8	1.7	4.7	5.3	4.0	4.0	0.6	0.7	35.0	37.0	0.2	0.2	14.0	15.0	29.5	30.8	7.3	8.4	132.0	135.0	6.9	5.0	0.8	0.7	0.2	0.2	18.0	17.0	1.4	1.4	30.0	30.0
M002749	M002750	KR-307	61.00	62.00	746.0	640.0	4.3	3.4	1.9	1.6	2.2	1.7	7.9	6.8	4.0	4.0	0.7	0.6	508.0	427.0	0.2	0.2	17.0	19.0	188.0	152.0	64.4	52.9	145.0	147.0	16.8	14.0	1.0	0.7	0.2	0.2	20.0	17.0	1.8	1.4	440.0	410.0
M002774	M002775	KR-307	87.00	88.00	124.0	139.0	4.6	3.4	2.6	1.9	1.4	1.7	5.8	5.0	5.0	4.0	0.8	0.6	66.0	82.0	0.3	0.2	11.0	11.0	46.5	46.7	12.4	12.9	163.0	160.0	7.3	7.1	0.9	0.7	0.3	0.3	25.0	17.0	2.2	1.6	60.0	70.0
M002799	M002800	KR-307	113.00	114.00	367.0	187.0	4.9	4.4	2.3	2.2	-0.2	-0.2	7.5	7.2	1.0	2.0	0.9	0.8	267.0	116.0	0.3	0.3	2.0	2.0	98.9	65.7	32.2	18.2	109.0	114.0	11.2	9.4	0.9	0.9	0.3	0.3	29.0	28.0	1.9	1.9	240.0	100.0
M002824	M002825	KR-307	195.00	196.00	84.0	88.0	3.6	4.1	2.1	2.1	1.2	1.1	5.5	5.6	6.0	5.0	0.7	0.7	41.0	44.0	0.3	0.3	11.0	10.0	33.7	34.9	9.3	9.9	136.0	135.0	6.5	5.8	0.7	0.8	0.3	0.3	21.0	21.0	2.0	1.9	30.0	40.0
M002849	M002850	KR-307	219.00	220.00	141.0	166.0	5.2	5.6	2.7	2.8	2.2	2.4	8.2	9.0	5.0	5.0	1.0	1.0	71.0	85.0	0.4	0.3	13.0	14.0	64.2	74.3	16.7	18.9	114.0	110.0	10.8	12.7	1.0	1.1	0.4	0.3	28.0	27.0	2.6	2.8	60.0	70.0
M002874	M002875	KR-308	99.00	100.00	64.0	60.0	4.2	4.2	2.3	2.2	1.0	1.1	5.1	4.7	4.0	5.0	0.9	0.8	31.0	28.0	0.3	0.3	11.0	11.0	27.2	26.1	7.1	6.8	117.0	114.0	5.5	5.1	0.6	0.7	0.4	0.3	23.0	22.0	2.3	2.1	30.0	30.0
M002899	M002900	KR-309	9.00	10.00	162.0	192.0	4.0	4.0	1.3	1.2	1.8	1.9	9.2	10.1	4.0	5.0	0.6	0.6	87.0	105.0	0.2	0.1	9.0	6.0	64.7	73.2	18.3	21.7	124.0	128.0	11.9	13.7	1.0	1.0	0.2	0.1	17.0	16.0	0.9	0.8	80.0	90.0
M002924	M002925	KR-309	142.00	143.00	21200.0	23200.0	26.4	26.5	5.4	5.8	82.9	91.3	134.0	138.0	1.0	1.0	3.0	3.1	14250.0	15750.0	0.4	0.5	6.0	6.0	5920.0	6470.0	2060.0	2220.0	2.0	1.0	464.0	507.0	10.6	10.6	0.6	0.6	64.0	68.0	3.2	3.8	10000.0	10000.0
M002949	M002950	KR-309	185.50	186.00	577.0	469.0	7.7	7.1	2.6	2.7	7.5	7.2	18.4	16.8	4.0	4.0	1.2	1.1	290.0	235.0	0.3	0.2	25.0	23.0	245.0	204.0	62.7	50.9	238.0	232.0	33.9	28.9	2.0	1.7	0.3	0.3	31.0	30.0	1.7	1.6	240.0	190.0



Statistics

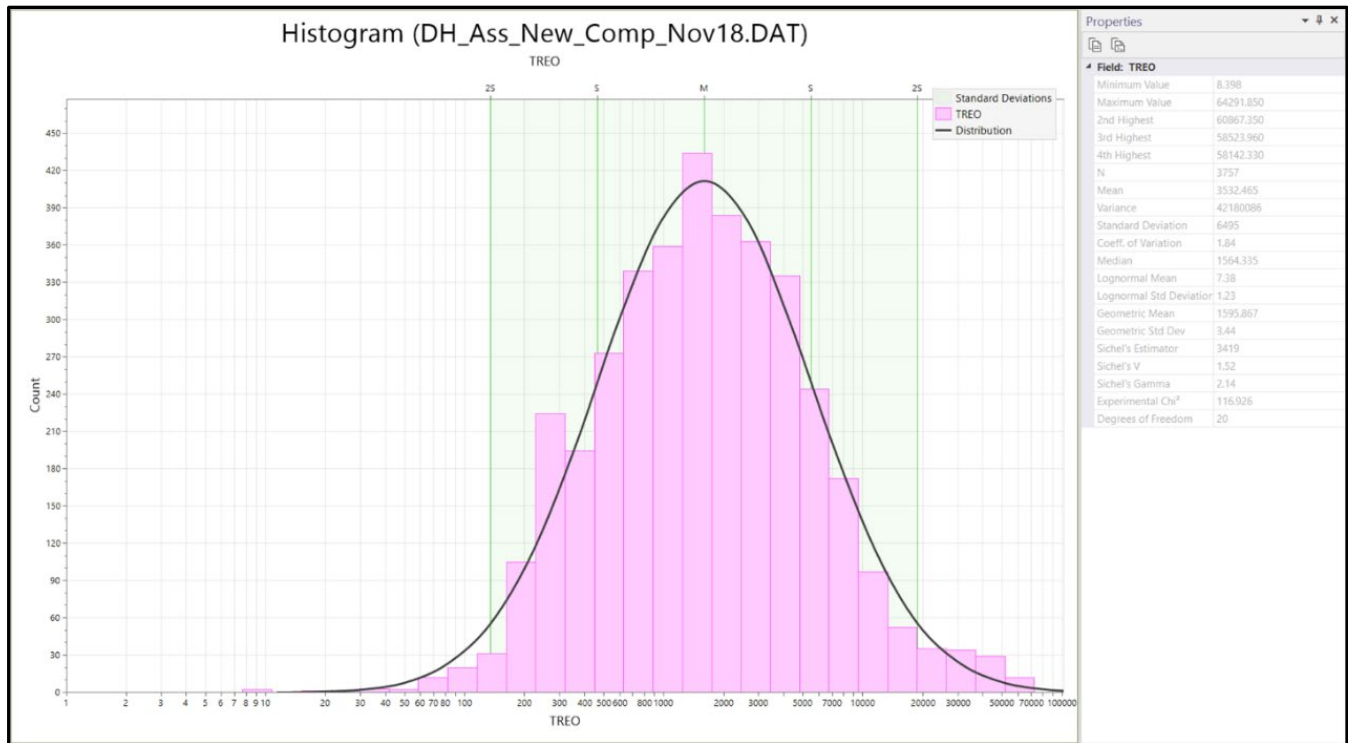


Figure 11. Distribution of 3,757 Assays as estimated, Mean = 3,525 ppm TREO.

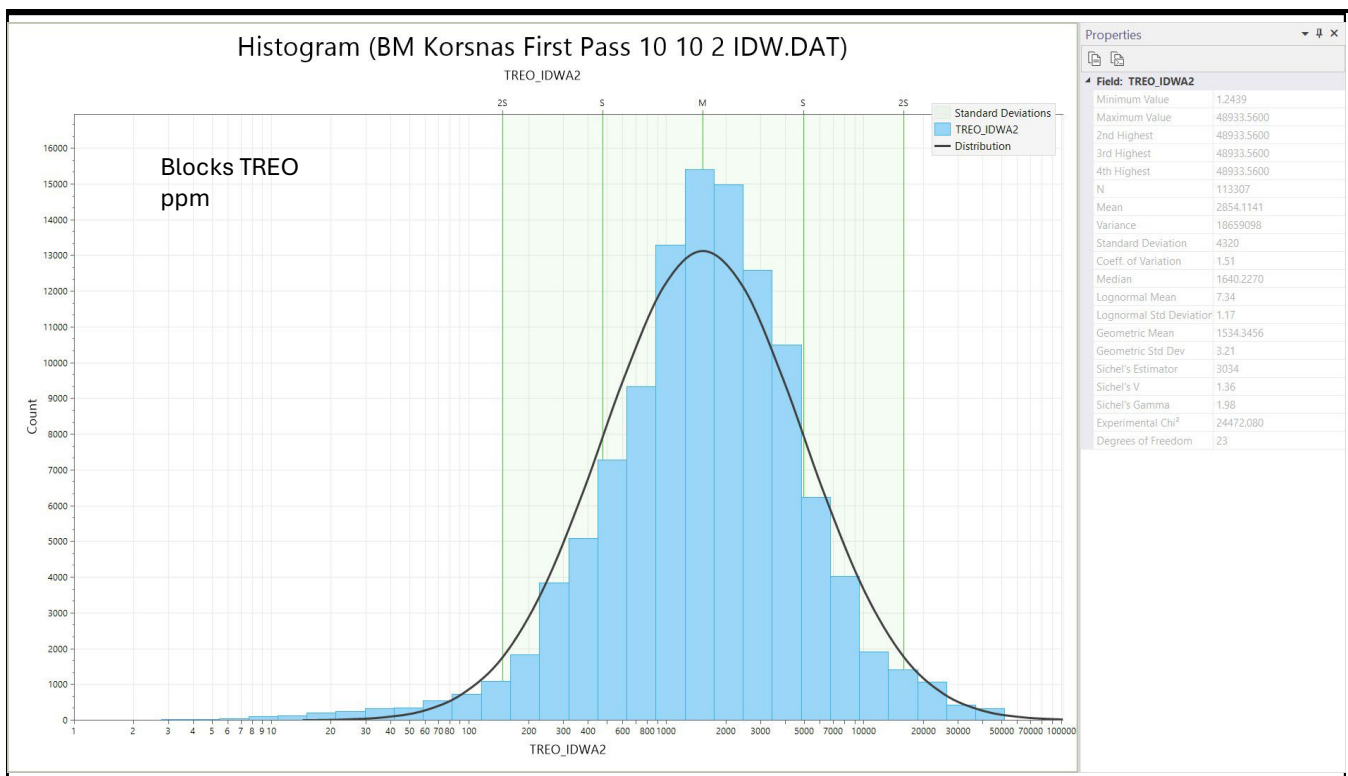


Figure 12. Distribution of 113,307 blocks as estimated 10m horizontal (x), 10m North South and 2m vertical (y) samples, Mean = 2,854 ppm TREO.

A review of the sample dataset compares reasonably well to the block model.

3D Modelling

Polygons were modelled for at least six separate strike zones, based on geology, often defined by carbonatite zones. A total of 46 separate domains were controlled according to the geological model and the maximum allowable distribution parameters. Specifically, no blocks were assigned beyond a maximum drill spacing of 120 metres along strike and dip.

Areas of pending assays are also assigned a grade of zero, which did locally, negatively impact high grade zones down dip of the mine trend, but this is considered prudent for this MRE.

Upper Bound Estimate: To base of erosion of geological pinch out of zones.

Lower Bound Estimate: Maximum of -400m RL from surface set at zero RL.

The 3D modelling process proceeded as follows:

1. Creating Sectional Strings:

East-west oriented sectional slices were created at approximately 10 metre north-south intervals for the defined surfaces, covering the extent of the drilled and sampled mineralised lodes. Closed strings were digitised for each section, connecting the base and the top sides.

Confidence in the orientation of the zones was derived not only from sectional interpretation but also from the significant structural database DH_Structural Log - recovered from the logging process and displayed below to illustrate the use of collected data in analysis of the mineralisation controlling vein structures. A total of 314 structural readings were taken from KR305 to KR309. KR310 was vertical and hence not orientated.

2. Creating the 3D Wireframe:

These 10 metre spaced closed strings were used to create a 3D wireframe, enclosing the contents of the mineralised zones. Wireframes were closed and validated.

3. Block Modelling:

A block model was created in Micromine, constrained by a wireframe representing the mineralised zones. However, the block model does not fully fill the wireframe, as the wireframe is interpretative in nature, allowing for flexibility in future drill planning. Blocks beyond the defined search ellipsoid semi-axes are not populated with grades, as shown in Figures 13 and 14.

4. Compositing:

Assays were composited into 1 metre intervals, reflecting the dominant 1 metre sampling interval used in the drilling program.

5. Interpolation:

Grades were interpolated into the block model using an inverse distance squared ($1/D^2$) algorithm. All elements in the database were interpolated in a double pass, applying a search ellipsoid with semi-axes dimensions of 120m (East), 120m (North), and 4m (RL) for Pass 2. Bulk density was not measured for this estimate but was assumed to be 2.7 t/m^3 , which the Competent Person considers a conservative value. Bulk density measurements will be incorporated into the next iteration of the Mineral Resource Estimate to enhance accuracy.

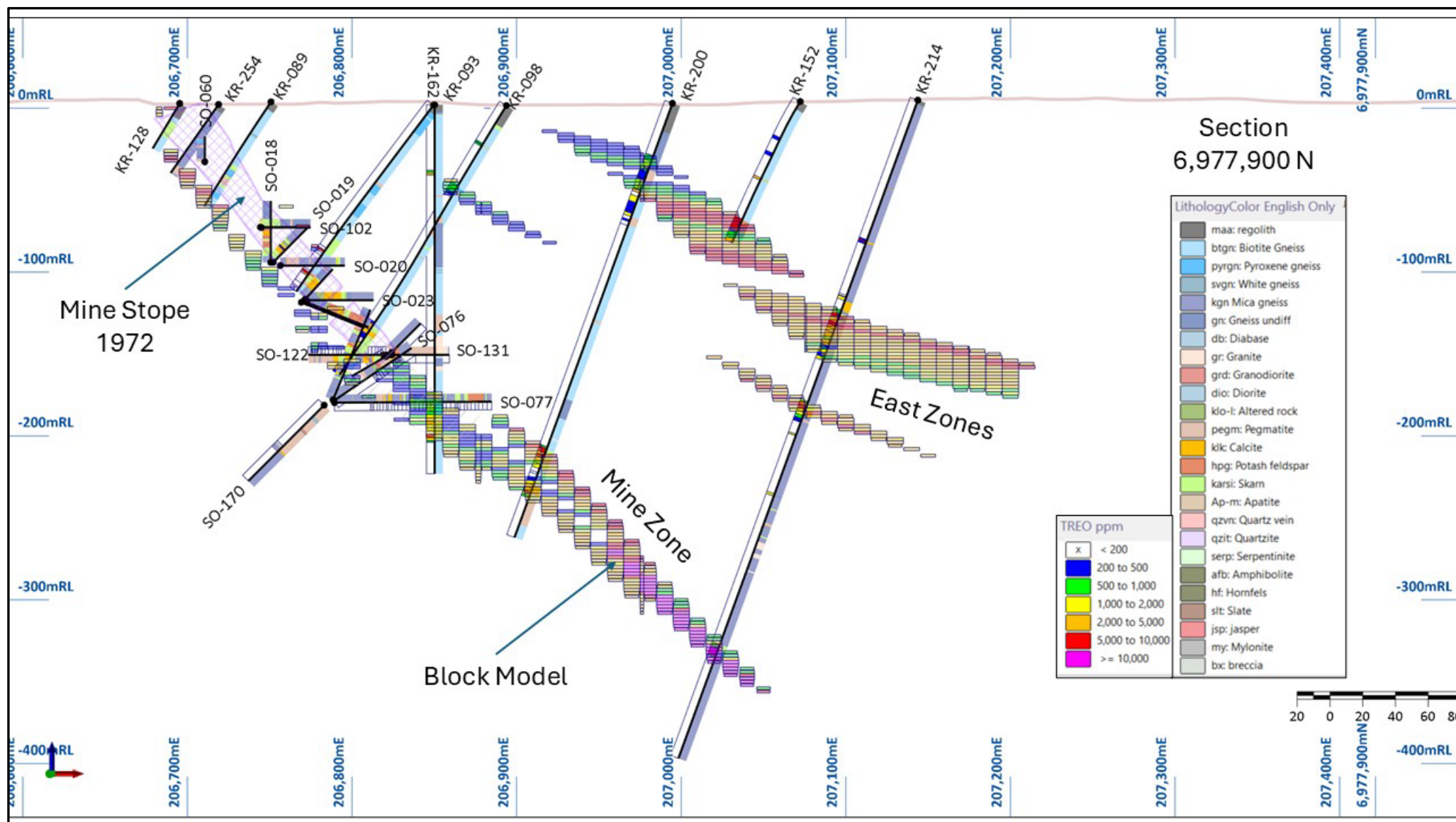


Figure 13. A void model was applied to ensure no estimation within modelled mined areas on the main mine trend. Change in dip on sectional interpretations results in no estimation being applied as the change may be due to offsetting faults.

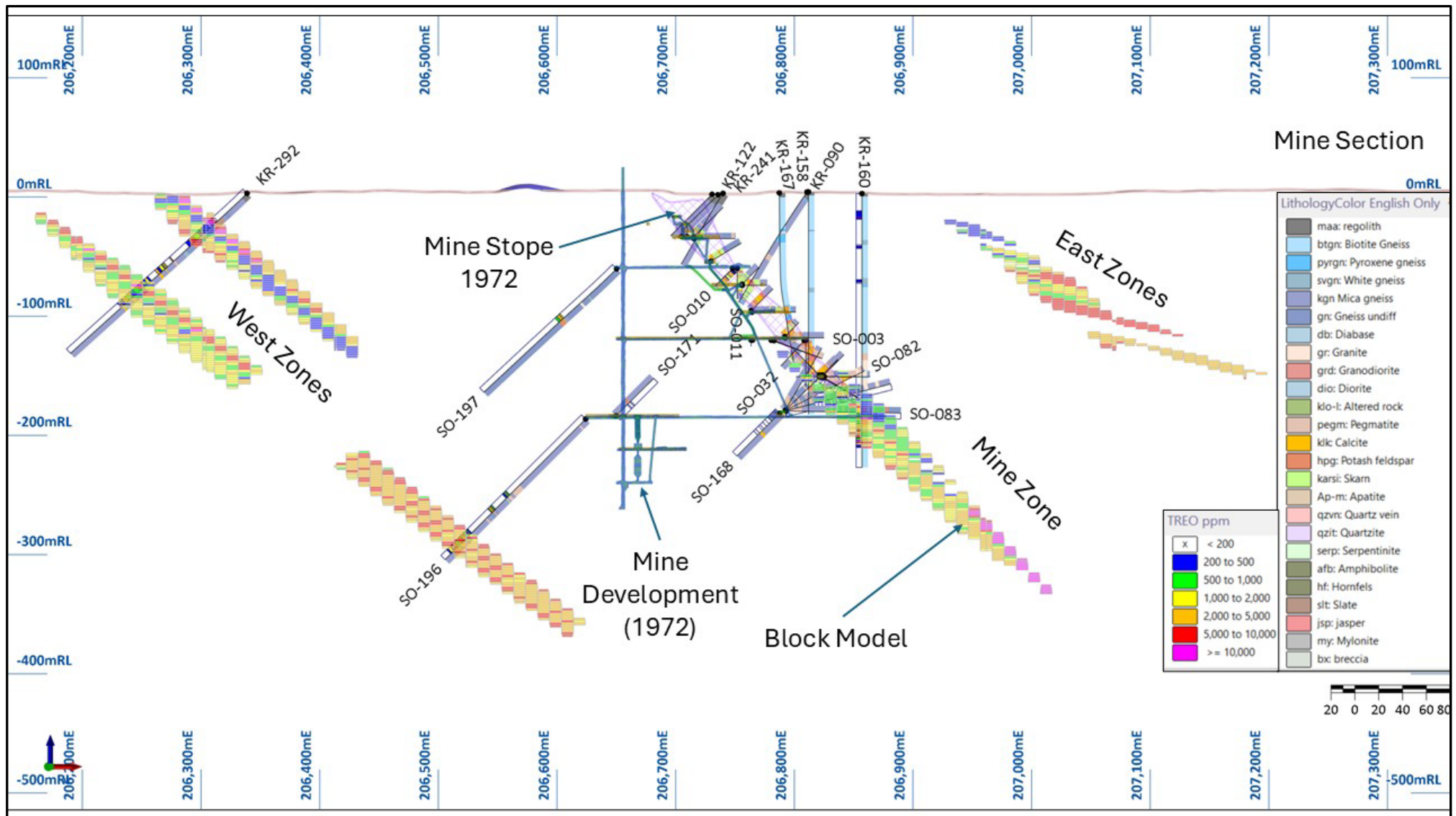


Figure 14. In areas of non-compliant drill spacing (ie more than 100m spaced pierce points), no blocks are estimated albeit the mineralised structures are likely to persist and will be modelled when any future infill or extension drilling is undertaken.

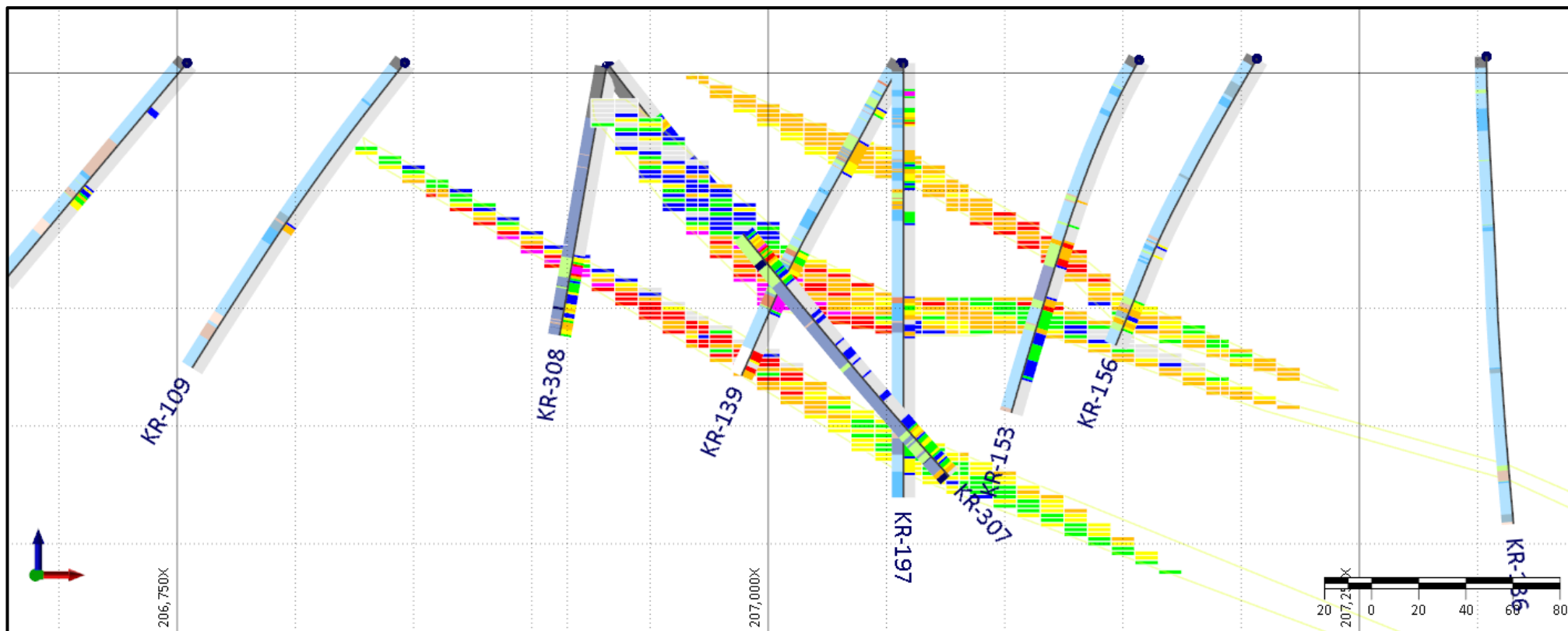


Figure 15. Structural measurements resulting from validated orientated core allowed an accurate interpretation of the mineralised zones (veins) to be depicted. In this case, KR307 and KR308 were measured to confirm the orientation of multiple mineralised zones intercepted in each hole.

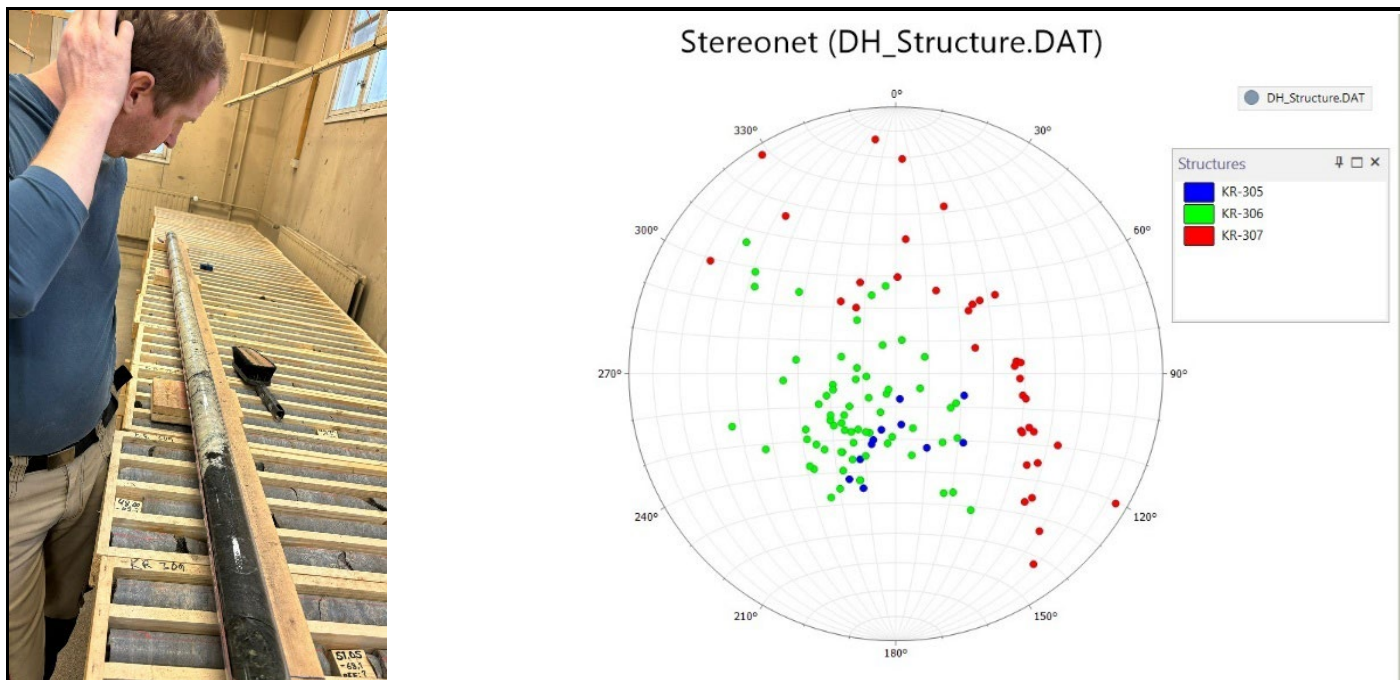


Figure 16. Identifiable white carbonatite about to be measured in the orientation tube.
Structural data from orientation tubes as depicted for KR305 to KR307 to stereoscope interpretation.

Table 4. Block modelling limits and search parameters.

Extents				
	Min centre	Block size	Max centre	Blocks
East	205400	10	207800	241
North	6976800	10	6979800	301
Z	-450	2	20	236

Search Ellipses					
Pass	Autofill	Radius	Axis 1 Factor	Axis 2 Factor	Axis 3 Factor
1		[1]	60	60	2
2		[1]	120	120	4

The creation of the block model was constrained by the 3D wireframe described above. Block factors were applied to ensure no tonnages were estimated outside of polygonal sectional boundaries.

Table 5. A total of four rare earths and lead were modelled.
Pb is not estimated a but a post mineral or post REE phase that was mined historically.

Methods and Attributes					
Method		Power	Attribute		Output Field
IDW (Anisotropic)	▾	2	TREO	≡	[TREO_IDWA2]
IDW (Anisotropic)	▾	2	Nd2O3_ppm	≡	[Nd2O3_ppm_IDWA2]
IDW (Anisotropic)	▾	2	Pr6O11_ppm	≡	[Pr6O11_ppm_IDWA2]
IDW (Anisotropic)	▾	2	Tb4O7_ppm	≡	[Tb4O7_ppm_IDWA2]
IDW (Anisotropic)	▾	2	Dy2O3_ppm	≡	[Dy2O3_ppm_IDWA2]

Table 6. Additional search ellipsoid parameters.

Search Criteria										
Pass	Autofill	Samples		Sectors				Holes		
		Min Samples Total	Max Samples Total	Sectors	Max Samples per Sector	Min Sectors Filled	Min Samples to Fill Sector	Min Holes	Min Samples per Hole	Max Samples per Hole
1	B+	[1]		Octants	[4]	[1]	[1]	[1]	[1]	[150]
2	B+	[1]		Octants	[4]	[1]	[1]	[1]	[1]	[150]

6. Model Validation:

The Block model was validated by visual inspection on a section by section basis and good agreement was observed between the model values and the original drill holes.

Resource Estimate

Table 7. Korsnäs Inferred Mineral Resource Estimate at various TREO cut-offs.

Cut-Off (ppm)	Resource (Mt)	TREO	Nd2O3	Pr6O11	Tb4O7	Dy2O3
		ppm	ppm	ppm	ppm	ppm
10,000	2,258,877	19,358	3,130	957	12	48
9,000	2,861,077	17,286	2,855	859	12	48
8,000	3,387,422	15,917	2,684	798	12	47
7,000	4,236,651	14,237	2,459	720	12	47
6,000	5,294,482	12,686	2,237	647	12	45
5,000	7,094,979	10,851	1,955	558	11	41
4,000	10,316,895	8,852	1,634	459	9	36
3,000	15,068,598	7,148	1,341	373	8	31
2,000	23,042,002	5,520	1,047	289	7	26
1,000	38,157,086	3,911	744	204	5	19

Grade Tonnage Relationship

Figure 17 below depicts the TREO grade-tonnage for various TREO cut-off grades:

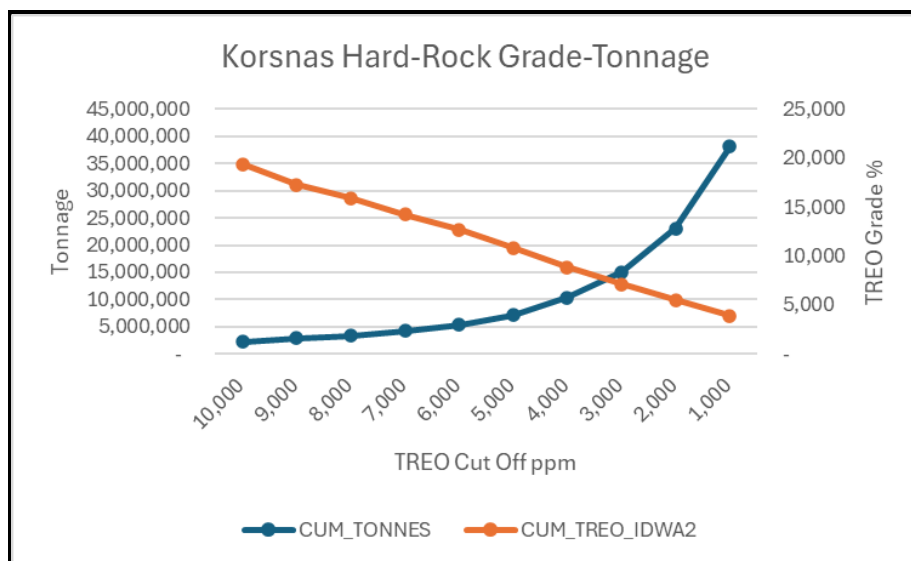


Figure 17. Modelled grade-tonnage curve.

Reasonable Potential of Eventual Economic Extraction

The prospects for eventual economic extraction of rare earth oxides from the 46 currently separate modelled grade domains within the geological model of the Korsnäs carbonatite veins (**Zones**) have been assessed by the Competent Person with consideration given to a number of material factors including, amongst other matters, the impact of the world and European geopolitical environment on future REE pricing and, given flatter dips confirmed by detailed structural studies completed by Prospech geologists based on the results from the recent drilling campaign completed by the Company, the potential for a partial open pit mining operation at Korsnäs.

Mining methodologies, processing costs, metal prices and metallurgical recoveries are uncertain at this stage, but assumptions have been made based on a review of publicly available peer company information including ASX listed Hastings Technology Metals Ltd's Yangibana project, Rarex Ltd's Cummins Range project and Dreadnought Resources Ltd's Mangaroon project.

It is the Competent Person's opinion that, with more exploration and drilling, some amount of the Exploration Target is likely to be converted to a resource estimate. Further, the 46 separately block modelled zones will likely be consolidated to possibly less than 6 contiguous zones with a consequent increase in quality and quantity of the currently reported Inferred MRE.

Based on the assumptions adopted by the Competent Person, a theoretical breakeven cut-off grade is indicated between 0.2% and 0.5% TREO.

Given these uncertainties, the Competent Person considers that it is reasonable to classify the mineral resource estimate in the Inferred Category and use a cut-off grade of 0.5% TREO for summary reporting purposes of the Inferred MRE in this announcement.

Exploration Target in Addition to the Inferred MRE

In addition to this Inferred MRE, adjacent to and along strike from the Inferred MRE, a grade-tonnage estimate, classified as an Exploration Target until additional drilling and metallurgical test work which is currently underway confirms the likelihood of eventual economic extraction, is reported as follows (refer red open Exploration Target zones in Figure 18 below):

A range of 10Mt to 12Mt @ from 1.0% to 1.2 % TREO

The potential quantity and grade of the Exploration Target is conceptual in nature. There has been insufficient exploration (including metallurgical test work) to estimate a Mineral Resource and it is uncertain if further exploration will result in the estimation of a Mineral Resource.

The Korsnäs Hardrock Exploration Target was developed based on initial geological observations, historical data, and recent exploration activities conducted within the project area. These activities included glacial boulder train analysis, geochemical sampling and considerable historical drill hole data, which have collectively confirmed the presence of mineralisation and key lithological controls.

The target was defined using a combination of geological modelling and volumetric estimation techniques. A preliminary 3D geological model was constructed using available drill hole data, surface outcrop information and geophysical interpretations. The potential tonnage was estimated by applying assumed continuity of mineralisation over observed extents, while grade ranges were inferred from available assay data and assumed to be similar to the Inferred MRE.

Assumptions regarding continuity, depth and grade were informed by analogous deposits in similar geological settings. However, these remain conceptual due to the limited data coverage. The volumetric calculations are based on a bulk density assumption of 2.7 t/m³, consistent with regional analogues as direct density measurements have not yet been undertaken.

The Exploration Target is in addition to the Inferred MRE reported herein.

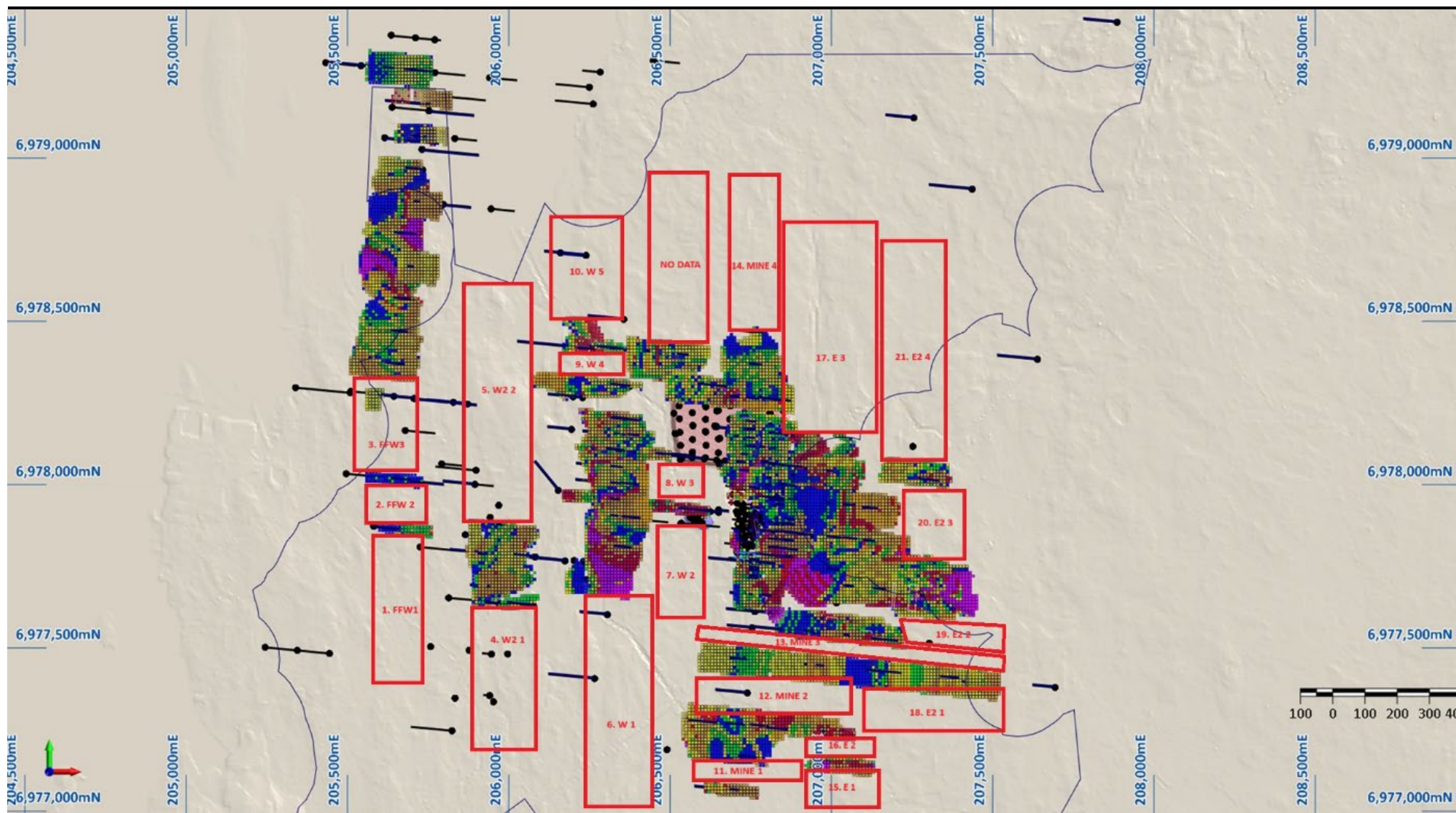


Figure 18. Exploration Target zones which will influence future drill planning and inform the JORC Exploration Target estimation.

Additional Work Program

Planned activities aim to improve the status of the current exploration target to a mineral resource estimate. The work program includes:

- Commencement of additional metallurgical tests, likely at GTK Mintec laboratory in Finland.
- Focus on the likely Fluorapatite dominated feedstock outcome with liaison with EU based processing facilities.

Table 8. Metallurgical test work will continue with sampling for selected zones of half-core from the 2024 drill core. In addition, twin samples from the TSF drilling program will be subjected to metallurgical testing.

LABORATORY TESTS	Hard rock		Tailings /pilot
	OULU	GTK	OULU
	Laboratory scale		Lab scale and Pilot scale
Sample characterization:			
1 Moisture analysis (dried to constant mass at 105 °C)	/	/	/
2 chemical content (ICP and XRF, including the content of all key REEs (Ce, La, Nd, Pr, Sm etc)),	/	/	/
3 mineralogical evaluation (SEM/EDS, QEMSCAN, TIMA imaging)	/	/	/
4 mineral liberation analysis (MLA)	/	/	/
5 specific gravity	/	/	/
6 bulk density determination	/	/	/
7 Bond work index determination of Host Rock sample	/	/	/
Gravity testwork			
8 Preliminary gravity testwork to determine if a gravity separation can pre-concentrate the ore prior to flotation, should evaluate all key REE elements (especially Nd2O3, Pr2O3, CeO2, La2O3 and Sm2O3), key other elements (Th, Y, Pb, PO4, F) in Korsnäs ore as well as major gangue elements (SiO2, Al2O3, FeO, CaO, MgO).	/	/	/
Flotation testwork			
9 Milling (liberation range)	/	/	/
10 rougher flotation test	/	/	/
11 evaluating the use of depressants	/	/	/
12 determining if desliming is required	/	/	/
13 multi-stage cleaner testing	/	/	/
Magnetic separation testing			
14 Preliminary magnetic separation test: Davis tube up to 10,000 Ga	/	/	/
15 A Butcher curve (REE separation vs magnetic intensity)	/	/	/
16 WHIMs (wet high intensity magnetic separation)	/	/	/
Thickening testing a suitable vendor (such as SNF or BASF) to determine the most appropriate flocculant (and coagulant if needed) for thickening			
17 Inconjunction with Locked cycle testing:	/	/	/
18 preliminary tailings	/	/	/
19 concentrate	/	/	/
Leach testing on REE concentrate			
20 Preliminary leach test using sulfuric acid or caustic cracking: Leach solids and liquids should be assayed for all key elements including REEs, Th, U, Fe, Al, Ca, Mg, Si and Pb. Liquors should be assayed for the acidity level (either H2SO4 or HCl) as well as pH and redox levels.	/	/	/
Sample	100 kg	100 kg	100 kg first
For hard rock beneficiation method:			
UOULU: new work flow with innovative crushing and flotation			
GTK: Innovative mineralogical and geological characterization, plus conventional beneficiation			
Compare the two beneficiation methods			

Comparison to third party REE Resource Estimates

The purpose of this comparison work is determination of interim lower cut of grade in lieu of robust economic studies for this first pass Inferred Resource Estimate. The Company's priority is to increase knowledge of economic factors including the likely output being a Fluorapatite feedstock and to determine utility of drilling which would results in greater continuity hence tonnage estimation in future estimates.

Table 9. Comparison with pre-development and mining projects without consideration for components of open pit versus underground mining solutions.

Prospect	TREO%	Tonnes	MCap(AS)	Lower Cut%	Category	Geological Setting	Company	Date	Comment
Cummins Range	1.1	18.8	8	0.5	Inferred	Carbonatite	Rare X(REE ASX)	2022	Close Korsnas Analogy
Korsnas	1.1	7.1	10	0.5	Inferred	Carbonatite	Prospect Ltd (PRS ASX)	2024	
Nechalacho	1.17	213	12	0.1 NdPr	Resources	Metamorphic	Vital Metals (VML ASX)	2024	
Olserum	0.6	4.5	12.6	0.4	Resources	Metamorphic	European Green Transition (EGT AIM)	2013	
Foxtrot	0.9	6.7	20	155ppm Dy	Inf Ind	Metamorphic	Search Minerals (SHCMF OTC)	2024	
Norra Karr	0.5	110	21.9	0.1	Inferred	Syenite	Leading Edge Materials (TSXV)	2021	
Ngualla	4.8	18.5	30	3	Reserve	Carbonatite	Peak Rare Earths (PEK) – Canaccord cover	2024	
Brockman	0.71	41.4	51.3	0.2	Inf Ind	Carbonatite	Hastings Technology Metals (HAS ASX)	2023	
Yangibana	0.9	21.6	51.3	0.2	Inf Ind	Carbonatite	Hastings Technology Metals (HAS ASX)	2023	Close Korsnas Analogy
Araxa SGQ	3.99	21.9	55	2	Inf Ind Me	Carbonatite	St George (SQG ASX)	2012	
Kangankunde	2.9	23.7	107	1	Reserves	Carbonatite	Lindian Resources (LIN ASX)	2024	
Browns Range	0.96	6.44	140	0.15	Inf Ind	Metamorphic	Northern Minerals (NTU ASX)	2022	
Bear Lodge	4.1	6	250	2.18	Inf Ind		Rare Element Resources (REEMF OTC)	2024	
Nolans	2.6	56	345		Inf Ind Me		Ara fura (ARU ASX)	2024	
Mountain Pass	8	16.7	3260	5	Reserve	Carbonatite	MP Materials (MP NYSE)	2024	
Mt Weld	11.7	9.7	7340	5	Reserve(s)	Carbonatite	Lynas (LYN ASX)	2019	
Bayan Obo	6	48	Private Lux		Resource?	Carbonatite	Chinese SOE BYEB	2017	
Zandkopsdrift	1.92	19.5	Private		Reserves		Frontier Rare Earths	2012	

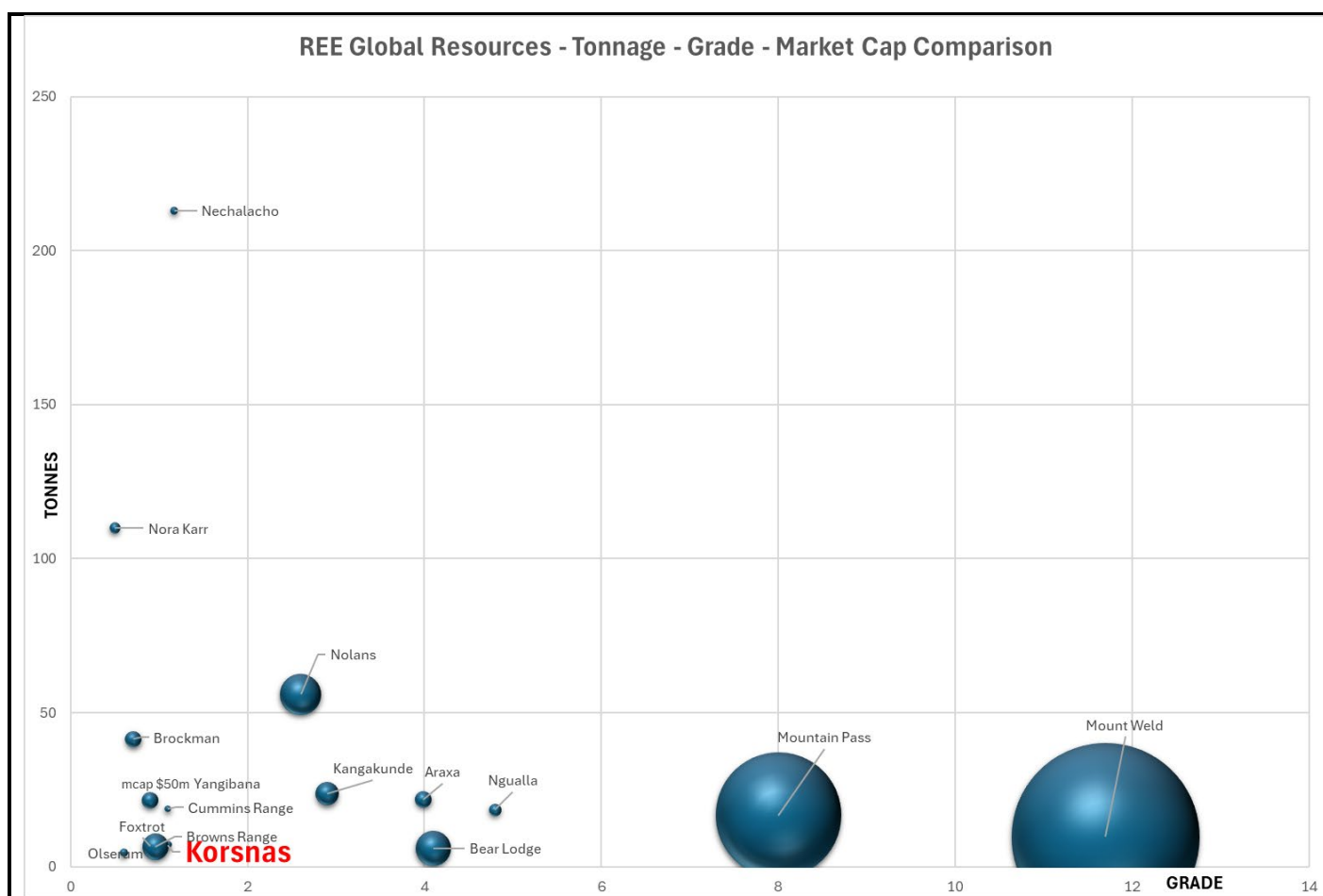


Figure 19. In the case of Korsnäs grade or recoverable grade with a view to robust metallurgical test work may improve industry profile. Bubble size relate to market capitalisation in A\$ as per previous Table 9. Korsnäs is likely to grow in tonnes if not grade in the coming iterations. No comments are made about potential change in market capitalisation (bubble diameter).

About Prospech Limited

Founded in 2014, the Company focuses on mineral exploration in Finland and Slovakia, with a mission to discover, define, and develop critical elements deposits containing metals such as rare earths, lithium, cobalt, copper, silver, and gold. Prospech is actively positioning itself to contribute to Europe's mobility revolution and energy transition. With a strong portfolio of prospective base and precious metals projects in Slovakia, and the recent focus on rare earth element (REE) projects in Finland, the Company is strategically aligned with the increasing demand for locally sourced minerals in Eastern and Northern Europe, regions that are highly supportive of mining. As demand for these critical elements grows, Prospech aims to become a leading player in the European market.

For further information, please contact:

Jason Beckton
Managing Director
Prospech Limited
+61 (0) 438 888 612

Jane Morgan
Investor Relations
jm@janemorganmanagement.com.au
+61 (0) 405 555 618

This announcement has been authorised for release to the market by the Board of Directors.

Cautionary Statement

The announcement and information, opinions or conclusion expressed in the course of this announcement contains forecasts and forward-looking information. Such forecasts, projections and information are not a guarantee of future performance, involve unknown risks and uncertainties. Actual results and developments will almost certainly differ materially from those expressed or implied. There are a number of risks, both specific to Prospech, and of a general nature which may affect the future operating and financial performance of Prospech, and the value of an investment in Prospech, including and not limited to title risk, renewal risk, economic conditions, stock market fluctuations, commodity demand and price movements, timing of access to infrastructure, timing of environmental approvals, regulatory risks, operational risks, reliance on key personnel, reserve estimations, cultural heritage risks, foreign currency fluctuations, and mining development, construction and commissioning risk.

Competent Person's Statement – Inferred Mineral Resource and Peripheral Exploration Target

The information in this Report that relates to the Inferred Resource Estimate, Exploration target and Exploration Results is based on information compiled by Mr Jason Beckton, who is a Member of the Australian Institute of Geoscientists. Mr Beckton, who is Managing Director of the Company, has sufficient experience which is relevant to the style of mineralisation and type of deposit under consideration and to the activity which he is undertaking to qualify as a Competent Person as defined in the 2012 edition of the 'Australasian Code for Reporting of Exploration Results, Mineral Resources and Ore Reserves'. Mr Beckton consents to the inclusion in this Report of the matters based on the information in the form and context in which it appears.

The Company confirms that it is not aware of any new information or data that materially affects the information in the original reports, and that the form and context in which the Competent Person's findings are presented have not been materially modified from the original reports.

The potential quantity and grade of the stated Exploration Target is conceptual in nature, there is currently insufficient exploration completed to support a mineral resource of this size and it is uncertain whether continued exploration will result in the estimation of a JORC resource. The Exploration Target has been prepared in accordance with the JORC Code (2012).

pjn12414

JORC Code, 2012 Edition – Table 1

Section 1 Sampling Techniques and Data

(Criteria in this section applies to all succeeding sections.)

Criteria	Commentary
<i>Sampling techniques</i>	Diamond core drilling was undertaken or sampled from storage to produce assays. Core was oriented for structural and geotechnical logging where possible in the case of KR305 to 310. This was not possible for the historic core.
<i>Drilling techniques</i>	HQ (63.5mm) diamond core drilling from 8m downhole post mud rotary to pass unsampled till cover. Prior drilling NQ (47.6mm) and BQ (36.4mm) and in minor underground cases AQ (35.3mm - which could not generally be sampled).
<i>Drill sample recovery</i>	Recoveries on the 2024 program averaged over 98%.
<i>Logging</i>	GTK Loppi Drill Core Library - core ordered was reviewed and photographed (dry and wet) after sampling intervals were marked and submitted. No geological logging was completed in pre 2024 core as geological logs from Outokumpu Oy are to a high standard and it was deemed redundant to relog the geology. 2024 KR305 to KR310 program - Holes were logged at the Korsnäs storage facility with RQD recoveries and orientation lines completed for runs. In general, over 80% of core could be orientated. After orientation then structural measurements were then taken at a frequency of at least one per run orientated. A total of 395 Recovery and RQD recordings are taken from KR305 to KR310.
<i>Sub-sampling techniques and sample preparation</i>	GTK Loppi Drill Core Library – Samples are normally 1 metre maximum in regard to half-core. Minimum sample length is 0.20m. Sample intervals marked up when core is returned to core boxes. Geological log then follows and finally dry and wet photography for all core boxes or the entire hole. All samples generated have identification that are registered in internal control spreadsheets. This identification is linked to the name of the hole and interval to which the sample belongs.
<i>Quality of assay data and laboratory tests</i>	Assays were be carried out by ALS, an internationally certified commercial laboratory following standard procedures (ALS method ME-MS81h for REEs). 2024 KR305 to KR310 Program - Duplicates in quarter-core were inserted, both being quarter-core and results have been analysed in the body of this report. Prospech inserted standards and blanks were not used due to the lack of ready availability of suitable reference materials for REEs. ALS has its own system of standard and blanks which were reported to Prospech and showed no issues. This lack was mitigated by the cross referencing a large numbers of samples with readings from a hand-held pXRF analyser. On average the ALS results for La Ce Nd and Pr were ~10% lower than the pXRF readings. It is Prospech's plan to submit pulps and coarse rejects to a second commercial laboratory for additional assaying and comparison of REE concentrations.
<i>Verification of sampling and assaying</i>	2024 KR305 to KR310 Program – Holes KR308 and KR310 twinned holes were drilled and assays. Results show good correspondence between the holes. Rare Earth Oxide values were calculated from chemical formulas and atomic weights.
<i>Location of data points</i>	LIDAR topographical information is available free from the GTK and is used to control the RL collar coordinates for all pre-2024 holes. Mitta OY used an DGPS to survey the collar locations of the 2024 KR305 to KR310 Program in the ETRS-TM35FIN projection (EPSG:3067).
<i>Data spacing and distribution</i>	Drill or pierce point spacing in the plane of the polygons files used to estimate the resource, were also controlled in that drill spacing beyond 120m which would not result in resource blocks being estimated to Inferred Resource. Sample compositing was applied prior to block modelling to 1m composites. Section where previously spaced from 10m in the mine area.
<i>Orientation of data in relation to geological structure</i>	Full core orientation was completed of key mineralised structures but also host or wall rock foliations and cross cutting, unmineralised structures. A total of 314 structural readings were taken from KR305 to KR309. KR310 was vertical and hence not orientated.
<i>Sample security</i>	Samples were sealed securely in double plastic bag and kept in a secure area until despatch to the laboratory by professional courier after being sealed in wooden boxes.

Criteria	Commentary
	
Audits or reviews	No audits or reviews of the data management system have been carried out.

Section 2 Reporting of Exploration Results

(Criteria in this section applies to all succeeding sections.)

Criteria	Commentary
Mineral tenement and land tenure status	<p>Prospech Limited has 100% interest in Bambrä Oy ('Bambrä'), a company incorporated in Finland.</p> <p>The laws of Finland relating to exploration and mining have various requirements. As the exploration advances specific filings and environmental or other studies may be required. There are ongoing requirements under Finnish mining laws that will be required at each stage of advancement. Those filings and studies are maintained and updated as required by Prospech's environmental and permit advisors specifically engaged for such purposes.</p> <p>The Company is the manager of operations in accordance with generally accepted mining industry standards and practices. The Korsnäs project's tenure is secured by Exploration Permit Application Number ML2021:0019 Hägg and Reservation Notification VA2023:0040 Hägg 2.</p>
Exploration done by other parties	The area of Korsnäs has been mapped, glacial till boulder sampled and drilled by private companies including and Outokumpu Oy.
Geology	<p>The rocks of the Korsnäs deposit can be divided into 5 categories: calcite veins/dikes, skarn, migmatitic gneiss, granitic pegmatite, and strongly altered rocks. The REE reside in the calcite veins/dikes, skarn and strongly altered rocks. The calcite veins/dikes consist primarily of calcite with Sr-Ba feldspars, pigeonite pyroxenes, sulphides such as pyrrhotite, galena and pyrite, and REE phases such as bastnäsite and monazite as inclusions and around REE fluorapatite. The skarns consist primarily of diopside pyroxenes with perthitic Sr-Ba feldspar and albite, and sulphides such as pyrrhotite and pyrite. It also contains REE phases in the form of allanite, REE-bearing titanite and apatite. The strongly altered rocks have a wide range of compositions, some of them barren, some strongly enriched in REE. There are magnetite veins containing euhedral monazite crystals, others consist of a chalcedony matrix with REE apatite, monazite and bastnäsite.</p>

Criteria	Commentary
----------	------------

Drill hole Information

Drill Hole Collar Information ETRS-TM35FIN projection (EPSG:3067) below in total 481 drill holes.

All significant assays have been reported refer to www.prospech.com.au

Hole_ID	East	North	RL	Depth	Aimuth_GRD	Dip	Year
KR-001	205615.34	6979062.10	1.27	196.32	95.30	-28.00	1952
KR-002	205638.64	6979155.40	0.72	176.00	95.30	-42.00	1952
KR-003	205752.58	6979144.35	1.32	240.06	95.30	-31.00	1952
KR-004	205730.89	6979026.27	1.20	239.82	95.30	-29.00	1953
KR-005	206239.45	6978701.85	2.10	165.53	275.30	-36.00	1953
KR-006	205797.05	6978857.88	0.85	121.77	95.30	-42.00	1953
KR-007	205945.21	6978844.13	0.55	101.74	95.30	-40.00	1953
KR-008	205432.28	6979291.58	0.55	118.35	95.30	-43.00	1953
KR-009	205641.79	6979475.10	0.55	223.18	95.30	-37.00	1953
KR-010	206285.10	6979815.86	0.55	181.49	275.30	-37.00	1953
KR-011	205197.60	6980318.90	0.55	200.12	95.30	-40.00	1953
KR-012	206258.17	6980020.09	1.40	149.68	275.30	-44.00	1953
KR-013	206355.84	6980011.36	1.99	160.35	275.30	-45.00	1953
KR-014	206270.58	6979616.42	2.22	63.36	275.30	-53.00	1953
KR-015	205708.73	6978263.63	3.13	140.25	95.30	-38.00	1953
KR-016	205828.04	6978251.87	4.17	89.96	95.30	-39.00	1953
KR-017	205706.14	6978263.77	3.14	150.22	275.30	-40.00	1953
KR-018	205792.24	6978063.56	2.82	101.24	95.30	-45.00	1953
KR-019	206082.28	6977778.56	3.19	91.85	95.30	-40.00	1953
KR-020	206153.50	6977982.45	4.68	170.83	320.30	-40.00	1953
KR-021	206228.99	6978266.35	4.98	119.07	275.30	-42.00	1953
KR-022	206199.48	6978269.00	4.43	120.48	275.30	-42.00	1953
KR-023	206194.46	6978169.07	4.08	111.82	275.30	-44.00	1953
KR-024	206262.73	6978413.34	2.17	124.20	275.30	-45.00	1954
KR-025	206356.51	6978505.98	2.32	202.50	275.30	-45.00	1954
KR-026	206556.65	6978394.61	4.49	200.80	275.30	-40.00	1954
KR-027	206437.66	6978406.44	4.02	236.52	275.30	-40.00	1954
KR-028	206183.23	6978422.99	1.39	205.35	275.30	-40.00	1954
KR-029	205339.27	6978296.76	0.70	171.90	95.30	-45.00	1955
KR-030	206793.74	6977259.39	1.50	227.66	275.30	-58.00	1954
KR-031	205678.96	6978165.50	4.86	151.10	95.30	-45.00	1954
KR-032	206558.16	6977281.92	1.93	131.46	95.30	-40.00	1954
KR-033	206638.06	6977274.35	1.83	50.27	95.30	-40.00	1954
KR-034	206798.72	6977258.93	2.60	128.03	12.30	-90.00	1954
KR-035	206798.72	6977258.93	2.84	158.65	95.30	-52.00	1954
KR-036	206728.65	6977166.18	1.79	135.10	275.30	-90.00	1954
KR-037	206151.70	6976612.78	2.70	82.46	0.00	-90.00	1954
KR-038	206704.00	6976661.66	3.10	121.92	0.00	-90.00	1954
KR-039	206648.71	6977061.50	3.95	34.00	0.00	-90.00	1954
KR-040	206490.58	6977187.93	2.58	174.61	0.00	-90.00	1954
KR-041	205832.70	6979059.67	0.84	125.22	95.30	-45.00	1954
KR-042	205720.05	6979467.18	0.10	159.01	95.30	-40.00	1954
KR-043	205710.73	6979367.55	0.17	128.26	95.30	-42.00	1954
KR-044	205659.27	6979673.87	0.08	151.52	95.30	-40.00	1954
KR-045	205649.66	6979574.27	0.08	128.71	95.30	-45.00	1954
KR-046	205635.54	6979376.04	0.00	15.07	96.00	-45.00	1954
KR-047	205621.71	6979275.37	0.26	134.98	95.30	-45.00	1954
KR-048	205940.53	6979245.57	0.08	119.78	95.30	-44.00	1954
KR-049	205799.51	6979188.40	0.22	210.06	95.30	-45.00	1954
KR-050	205714.74	6979517.93	0.13	184.47	95.30	-45.00	1954
KR-051	205771.16	6979261.40	0.18	130.26	95.30	-40.00	1954
KR-052	205645.00	6979524.45	0.13	20.53	95.30	-45.00	1954
KR-053	206170.77	6979827.05	0.55	129.89	95.30	-64.00	1954
KR-054	206159.68	6978709.71	0.82	102.02	95.30	-45.00	1954
KR-055	205781.21	6979512.91	1.77	201.08	95.30	-52.00	1954
KR-056	205632.50	6979530.55	1.82	190.44	95.30	-45.00	1954
KR-057	205510.47	6978285.38	2.72	150.13	95.30	-47.00	1955
KR-058	205643.94	6978270.39	3.58	105.65	275.30	-45.00	1955
KR-059	206249.89	6979216.65	0.92	150.65	275.30	-44.00	1955
KR-060	206261.66	6979165.20	0.58	171.34	275.30	-48.00	1955
KR-061	206283.43	6979262.66	0.44	79.54	275.30	-45.00	1955
KR-062	206767.66	6977162.04	1.45	173.93	275.30	-45.00	1955
KR-063	206402.96	6978149.28	5.17	166.25	275.30	-39.00	1955
KR-064	206456.62	6978099.64	4.00	199.56	95.30	-45.00	1955
KR-065	206799.78	6977852.99	3.60	202.95	95.30	-44.00	1955
KR-066	206331.19	6978106.14	5.10	176.16	95.30	-42.00	1955
KR-067	206316.47	6978207.72	3.34	131.41	95.30	-46.00	1955
KR-068	206670.25	6978072.44	2.50	199.18	95.30	-50.00	1955
KR-069	206534.71	6977881.49	3.99	199.72	95.30	-44.00	1955
KR-070	206448.05	6979298.12	1.01	118.93	95.30	-45.00	1955
KR-071	206568.06	6978082.29	4.30	197.99	95.30	-45.00	1955
KR-072	206535.01	6977881.46	3.94	18.12	275.30	-45.00	1955
KR-073	206644.18	6978177.38	4.20	201.67	95.30	-43.00	1955
KR-074	205813.78	6977653.21	1.43	199.75	95.30	-40.00	1955
KR-075	206385.57	6977894.43	3.01	179.96	95.30	-45.00	1955
KR-076	206231.34	6977764.73	2.47	28.60	95.30	-45.00	1956
KR-077	206202.55	6977767.42	4.53	18.50	95.30	-45.00	1956
KR-078	206643.96	6978074.99	4.40	134.52	95.30	-46.00	1956
KR-079	206734.84	6978065.59	4.00	61.35	275.30	-42.00	1956
KR-080	206735.03	6978065.48	4.00	77.40	275.30	-87.00	1956
KR-081	206909.67	6978052.27	1.90	188.66	275.30	-54.00	1956
KR-082	206739.34	6978090.10	3.30	65.42	275.30	-55.00	1956
KR-083	206824.23	6978034.93	3.20	122.90	275.30	-55.00	1956
KR-084	206827.77	6978109.37	3.80	121.48	275.30	-54.00	1956
KR-085	206761.54	6978140.58	3.20	81.48	275.30	-54.00	1956
KR-086	206752.14	6978016.34	3.60	69.96	275.30	-54.00	1956
KR-087	206766.31	6978190.49	2.80	103.40	275.30	-57.00	1956
KR-088	206764.14	6978166.17	2.90	80.64	275.30	-54.00	1956
KR-089	206750.58	6977965.83	3.90	75.65	275.30	-56.00	1956
KR-090	206809.94	6977905.71	4.10	108.92	275.30	-55.00	1955
KR-091A	206773.84	6978260.34	2.72	78.55	275.30	-53.00	1956
KR-091B	206773.84	6978260.34	2.72	158.34	275.30	-53.00	1956
KR-092	206829.85	6977854.20	3.50	130.50	275.30	-55.00	1956
KR-093	206849.32	6977956.10	1.90	141.24	275.30	-53.00	1956
KR-094	206731.40	6977814.86	2.90	118.32	275.30	-60.00	1955
KR-095	206480.85	6978091.15	3.90	151.96	275.30	-54.00	1956
KR-096	206826.14	6977756.46	4.30	163.66	275.30	-55.00	1956
KR-097	206710.94	6978145.41	3.38	66.34	275.30	-55.00	1956
KR-098	206893.64	6977951.76	1.65	193.57	275.30	-58.00	1956

Criteria Commentary

Hole_ID	East	North	RL	Depth	Azimuth_GRID	Dip	Year
KR-099	207155.86	6977426.15	3.92	193.11	275.30	-48.00	1956
KR-100	206782.62	6978364.94	3.99	146.00	275.30	-55.00	1956
KR-101	206789.69	6978464.28	4.53	146.97	275.30	-50.00	1956
KR-102	206605.82	6978078.76	3.40	188.80	275.30	-42.00	1956
KR-103	205894.98	6978000.39	1.94	155.46	275.30	-45.00	1956
KR-104	205695.58	6978012.19	2.75	179.68	275.30	-45.00	1956
KR-105	207031.20	6977835.38	3.15	342.07	275.30	-45.00	1956
KR-106	206813.93	6977658.11	3.82	135.56	275.30	-55.00	1956
KR-107	206776.24	6977766.65	3.10	92.65	275.30	-55.00	1956
KR-108	206771.83	6977718.42	4.40	67.03	275.30	-58.00	1956
KR-109	206846.27	6977555.79	4.37	158.22	275.30	-52.00	1956
KR-110	206716.99	6977772.59	3.10	56.16	275.30	-55.00	1956
KR-111	206976.73	6977442.99	3.62	119.89	275.30	-45.00	1956
KR-112	206773.39	6977743.70	3.87	87.63	275.30	-54.00	1956
KR-113	206826.42	6977804.67	3.97	116.45	275.30	-48.00	1956
KR-114	206379.94	6977805.11	5.38	159.19	275.30	-54.00	1956
KR-115	205975.19	6977785.45	2.06	67.75	275.30	-43.00	1956
KR-116	205725.20	6977808.62	1.76	220.00	95.30	-46.00	1956
KR-117	205895.13	6978000.88	1.89	170.09	95.30	-66.00	1956
KR-118	205581.35	6977872.82	3.59	157.18	95.30	-50.00	1956
KR-119	205496.14	6978033.25	2.05	172.49	95.30	-46.00	1956
KR-120	206884.08	6978149.43	1.93	221.62	275.30	-55.00	1956
KR-120-A	206884.08	6978149.43	1.93	35.78	275.30	-55.00	1956
KR-121	206823.56	6978063.23	3.78	126.54	275.30	-60.00	1956
KR-122	206739.66	6977911.88	3.05	69.08	275.30	-57.00	1956
KR-123	206883.43	6977852.21	1.90	172.32	275.30	-67.00	1956
KR-124	206770.66	6977859.64	3.29	83.08	275.30	-57.00	1956
KR-125	206721.62	6977864.02	3.07	59.57	275.30	-59.00	1956
KR-126	206396.96	6977998.99	4.65	214.21	275.30	-54.00	1956
KR-127	206896.32	6977797.64	1.74	212.30	275.30	-56.00	1956
KR-128	206694.89	6977969.43	2.95	32.11	275.30	-59.33	1956
KR-129	207396.25	6977405.69	7.46	43.21	0.00	-88.00	1956
KR-130	207196.62	6977422.54	4.64	184.97	275.30	-45.00	1956
KR-131	207218.38	6977672.46	6.26	154.85	0.00	-90.00	1956
KR-132	207395.26	6977405.78	7.46	166.18	275.30	-45.00	1956
KR-133	207345.93	6977660.84	6.81	159.32	275.30	-90.00	1956
KR-134	207693.65	6977378.99	8.56	150.86	275.30	-58.00	1957
KR-135	207156.45	6977425.99	3.89	184.00	0.00	-90.00	1956
KR-136	207303.73	6977514.34	6.97	198.96	95.30	-90.00	1956
KR-137	207168.46	6977677.12	3.92	112.74	275.30	-60.00	1957
KR-138	207130.77	6977827.56	4.83	183.71	0.00	-90.00	1956
KR-139	207056.14	6977536.67	4.21	149.30	275.30	-60.00	1956
KR-140	205904.38	6977792.38	1.64	44.56	95.30	-45.00	1956
KR-141	205865.10	6977846.30	1.89	174.70	95.30	-44.00	1956
KR-142	205903.28	6977792.48	1.63	149.00	275.30	-45.00	1956
KR-143	205696.92	6978011.47	2.72	166.41	95.30	-46.00	1956
KR-144	205903.78	6977792.43	1.48	81.60	0.00	-90.00	1956
KR-145	205903.36	6977792.27	1.62	35.88	275.30	-60.00	1956
KR-146	206076.22	6977629.88	2.45	205.09	275.30	-45.00	1956
KR-147	206080.99	6977778.68	3.07	175.52	275.30	-48.00	1956
KR-150	207068.90	6977686.03	2.74	82.40	275.30	-60.00	1956
KR-151	207079.89	6977831.63	3.93	111.90	275.30	-60.00	1957
KR-152	207072.17	6977933.96	4.10	95.85	275.30	-58.00	1956
KR-153	207156.45	6977523.88	5.50	159.86	275.30	-60.00	1956
KR-156	207206.27	6977519.22	6.00	135.96	275.30	-60.00	1957
KR-157	206815.57	6977855.24	3.70	170.67	275.30	-90.00	1957
KR-158	206811.13	6977905.60	4.20	186.55	0.00	-90.00	1957
KR-159	206740.54	6977811.60	2.90	80.77	0.00	-90.00	1957
KR-160	206855.87	6977901.42	2.86	229.74	0.00	-90.00	1957
KR-161	206810.98	6977806.12	3.32	128.60	275.30	-85.00	1957
KR-162	206850.02	6977956.03	2.14	225.20	0.00	-90.00	1957
KR-163	206757.00	6978013.47	4.13	108.34	275.30	-85.00	1957
KR-164	206799.44	6978009.51	2.98	162.62	0.00	-90.00	1957
KR-165	206700.11	6978018.79	3.55	38.36	275.30	-75.00	1957
KR-166	206833.71	6978006.30	3.00	188.80	0.00	-90.00	1957
KR-167	206787.04	6977910.16	3.45	143.58	95.30	-90.00	1957
KR-168	206724.79	6977941.11	3.31	82.31	0.00	-90.00	1957
KR-169	206724.17	6977941.17	3.13	53.90	275.30	-45.00	1957
KR-170	206805.77	6977933.54	4.18	134.27	275.30	-53.72	1957
KR-171	206778.72	6977934.41	3.38	148.82	0.00	-90.00	1957
KR-172	206806.62	6977933.46	3.74	187.05	0.00	-90.00	1957
KR-173	206764.32	6978113.29	2.55	81.07	275.30	-45.00	1957
KR-174	206809.15	6978109.10	3.00	211.45	0.00	-90.00	1957
KR-175	206831.71	6977931.11	3.80	205.26	0.00	-90.00	1957
KR-176	206804.50	6978059.28	3.00	232.53	0.00	-90.00	1957
KR-177	206777.65	6977986.42	4.32	179.88	0.00	-90.00	1957
KR-178	206795.19	6978035.03	2.70	186.33	0.00	-90.00	1957
KR-179	206777.58	6977986.42	4.40	112.80	275.30	-60.00	1957
KR-180	206807.47	6977983.63	3.00	167.82	0.00	-90.00	1957
KR-181	206738.65	6977462.43	2.00	167.82	275.30	-45.00	1957
KR-182	206738.65	6977462.43	2.00	138.32	275.30	-75.00	1957
KR-183	206844.02	6978105.84	2.25	244.98	0.00	-90.00	1957
KR-184	206753.94	6977561.50	4.25	121.26	275.30	-50.00	1957
KR-185	206843.70	6978156.12	3.00	214.12	0.00	-90.00	1957
KR-186	206736.24	6977759.14	3.00	78.68	0.00	-90.00	1957
KR-187	206758.16	6977757.09	3.20	112.63	0.00	-90.00	1957
KR-188	206742.39	6978039.96	2.50	110.50	0.00	-90.00	1957
KR-189	206742.39	6978039.96	2.50	73.22	275.30	-45.00	1957
KR-190	206726.27	6977760.07	2.75	35.90	275.30	-75.00	1957
KR-191	206710.92	6977992.65	2.62	56.36	0.00	-90.00	1957
KR-192	207019.57	6977134.67	2.00	191.20	0.00	-90.00	1957
KR-193	206779.26	6978111.89	2.55	205.47	0.00	-90.00	1957
KR-194	206816.95	6976902.36	2.00	148.30	0.00	-90.00	1957
KR-195	205970.85	6977634.71	2.00	87.58	275.30	-45.00	1958
KR-196	206979.34	6977241.94	1.50	208.71	275.30	-70.00	1958
KR-197	207056.82	6977533.19	4.20	184.57	0.00	-90.00	1958
KR-198	205946.65	6977480.91	1.65	46.50	275.00	-50.00	1958
KR-199	205952.87	6977334.88	2.00	147.65	0.00	-90.00	1958
KR-200	206994.44	6977941.03	3.00	281.96	275.30	-70.00	1958
KR-200A	206994.44	6977941.03	3.00	56.13	275.30	-70.00	1958

Hole_ID	East	North	RL	Depth	Azimuth GRID	Dip	Year
KR-201	205877.17	6977492.71	2.00	133.94	0.00	-90.00	1958
KR-202	205833.31	6977346.06	2.00	112.67	0.00	-90.00	1958
KR-203	205996.73	6977481.53	1.70	120.72	0.00	-90.00	1958
KR-204	205757.61	6977503.89	2.30	111.21	0.00	-90.00	1958
KR-205	205963.34	6977873.51	1.48	96.77	0.00	-90.00	1957
KR-206	205968.90	6977936.39	1.50	134.00	0.00	-90.00	1958
KR-207	205979.58	6977874.82	1.76	28.94	275.30	-50.00	1960
KR-208	205980.50	6977874.31	1.83	155.97	0.00	-90.00	1960
KR-209	205942.34	6977899.51	1.32	109.15	0.00	-90.00	1960
KR-210	206292.28	6977703.85	1.90	96.79	0.00	-90.00	1960
KR-211	206242.37	6977709.31	2.00	103.03	0.00	-90.00	1960
KR-212	206242.14	6977709.28	2.10	100.64	275.30	-50.00	1960
KR-213	206306.01	6977601.94	4.05	122.40	275.30	-45.00	1960
KR-214	207143.41	6977924.56	4.96	427.53	275.30	-70.00	1963
KR-215	207133.07	6977824.90	3.83	400.00	275.30	-70.00	1962
KR-216	206934.97	6977842.59	1.62	300.05	0.00	-90.00	1963
KR-217	207003.90	6978039.09	1.86	262.12	275.30	-60.00	1963
KR-218	205761.20	6979262.33	0.00	179.44	275.30	-45.00	1964
KR-219	205641.64	6979273.51	0.60	201.48	275.30	-45.00	1964
KR-220	205542.01	6979282.83	0.50	145.54	275.30	-45.00	1964
KR-221	205884.11	6979502.10	0.70	198.50	275.30	-45.00	1964
KR-222	205784.48	6979511.41	0.50	223.25	275.30	-45.00	1964
KR-223	205684.85	6979520.73	0.00	149.04	275.30	-45.00	1964
KR-224	207285.00	6977662.61	6.40	381.16	0.00	-90.00	1964
KR-225	205444.10	6977482.94	2.00	166.84	275.30	-45.00	1964
KR-226	207406.18	6977400.03	7.40	307.24	0.00	-90.00	1964
KR-227	205344.47	6977492.25	3.00	154.93	275.30	-45.00	1964
KR-228	205244.84	6977501.57	3.20	200.89	95.30	-45.00	1964
KR-229	206174.11	6977766.46	4.50	244.90	275.30	-60.00	1964
KR-230	205508.64	6978280.92	1.80	197.20	275.30	-45.00	1964
KR-231	207003.76	6978040.66	1.85	420.03	0.00	-90.00	1964
KR-232	205824.00	6977246.42	2.00	206.24	275.30	-45.00	1964
KR-233	205537.67	6976871.18	3.00	201.72	275.30	-45.00	1964
KR-234	207332.54	6978009.92	3.01	592.42	275.30	-70.00	1964
KR-235	207638.79	6978383.29	2.50	200.55	275.30	-45.00	1964
KR-236	207886.04	6979415.43	3.00	201.38	275.30	-45.00	1964
KR-237	207850.19	6979569.54	3.00	201.35	275.30	-45.00	1965
KR-238	206728.27	6977790.03	2.64	43.32	275.30	-44.00	1965
KR-239	206732.93	6977839.85	2.43	50.60	275.30	-45.00	1965
KR-240	206727.42	6977890.61	2.34	50.30	275.30	-45.00	1965
KR-241	206734.98	6977906.99	1.90	40.98	275.30	-45.00	1965
KR-242	206730.75	6977915.43	2.20	49.14	275.30	-45.00	1965
KR-243	206729.23	6977764.82	2.20	41.71	275.30	-45.00	1965
KR-244	206708.17	6977942.66	2.35	39.17	275.30	-45.00	1965
KR-245	206697.88	6977993.87	2.23	37.73	275.30	-45.00	1965
KR-246	206699.93	6978015.79	2.47	46.55	275.30	-45.00	1965
KR-247	206696.31	6978036.23	2.07	49.50	275.30	-45.00	1965
KR-248	205770.51	6979361.97	-0.05	201.65	275.30	-45.00	1965
KR-249	205723.94	6978863.81	0.40	200.24	275.30	-45.00	1965
KR-250	205733.25	6978963.44	1.00	127.17	275.30	-45.00	1965
KR-251	205742.57	6979063.07	1.00	111.08	275.30	-45.00	1965
KR-252	206750.65	6977762.81	2.03	74.00	275.30	-45.00	1965
KR-253	206746.02	6977863.75	2.31	50.92	275.30	-45.00	1965
KR-254	206718.47	6977966.82	2.27	51.00	275.30	-55.00	1965
KR-255	206736.24	6977990.29	2.32	60.70	275.30	-50.00	1965
KR-256	206723.22	6978016.63	2.15	49.38	275.30	-50.00	1965
KR-257	206799.84	6978009.47	2.05	103.85	275.30	-50.00	1965
KR-258	206847.66	6978005.00	1.67	156.92	275.30	-55.00	1965
KR-259	206886.85	6978026.46	1.26	177.50	275.30	-55.00	1965
KR-260	206838.66	6977779.71	3.76	130.00	275.30	-45.00	1965
KR-261	206806.44	6977757.60	3.26	130.56	275.30	-55.00	1965
KR-262	206771.90	6977710.58	4.33	77.44	275.30	-45.00	1965
KR-263	206878.51	6977775.99	2.75	150.10	275.30	-50.00	1965
KR-264	206774.23	6977735.48	3.96	100.72	275.30	-45.00	1965
KR-265	206860.92	6977802.76	3.23	150.25	275.30	-60.00	1965
KR-266	206883.17	6977825.80	1.93	179.95	275.30	-50.00	1965
KR-267	206895.46	6977849.78	1.71	170.18	275.30	-55.00	1965
KR-268	206887.83	6977875.62	1.51	166.64	275.30	-55.00	1965
KR-269	207436.29	6978904.73	3.00	200.88	275.30	-45.00	1965
KR-270	207255.66	6979122.62	3.15	138.68	275.30	-45.00	1965
KR-271	205751.88	6979162.70	0.29	200.83	275.30	-45.00	1966
KR-272	205715.12	6978764.09	0.49	200.10	275.30	-45.00	1966
KR-273	205705.31	6978664.55	1.08	200.28	275.30	-45.00	1966
KR-274	205696.00	6978564.92	1.82	189.39	275.30	-45.00	1966
KR-275	205686.68	6978465.28	2.89	200.60	275.30	-45.00	1966
KR-276	205677.37	6978365.65	1.97	200.25	275.30	-45.00	1966
KR-277	205872.30	6978246.93	4.91	200.70	275.30	-45.00	1966
KR-278	205898.50	6978043.47	2.00	201.10	275.30	-45.00	1966
KR-279	206338.53	6977901.84	3.65	104.36	275.30	-45.00	1966
KR-280	206407.27	6977895.41	3.24	200.90	275.30	-45.00	1966
KR-281	206356.38	6978103.59	3.93	201.10	275.30	-45.00	1966
KR-282	206754.29	6977661.97	3.32	100.00	275.30	-45.00	1966
KR-283	206762.59	6977610.95	4.22	100.78	275.30	-45.00	1966
KR-284	206812.40	6977606.29	4.27	200.60	275.30	-45.00	1967
KR-285	206872.94	6978253.89	2.35	249.44	275.30	-45.00	1967
KR-286	206676.10	6978298.42	3.44	200.00	275.30	-45.00	1967
KR-287	206365.47	6978200.83	4.41	200.30	275.30	-45.00	1967
KR-288	206374.79	6978300.46	2.58	200.00	275.30	-45.00	1967
KR-289	206346.84	6978001.56	2.07	200.00	275.30	-45.00	1967
KR-290	206360.81	6978151.01	4.37	200.35	275.30	-45.00	1967
KR-291	206351.50	6978051.38	3.46	200.00	275.30	-45.00	1966
KR-292	206342.19	6977951.75	3.06	200.00	275.30	-45.00	1967
KR-293	206729.99	6977262.24	1.42	199.96	275.30	-45.00	1967
KR-294	206739.30	6977361.87	2.49	150.46	275.30	-45.00	1967
KR-295	206711.36	6977062.98	2.24	199.70	275.30	-45.00	1967
KR-296	206266.06	6977406.11	4.57	199.78	275.30	-45.00	1967
KR-297	207016.32	6977637.48	2.25	150.37	275.30	-45.00	1967
KR-298	207025.63	6977737.11	2.70	158.60	275.30	-48.00	1969
KR-301	205900.00	6977690.00	2.00	39.10	276.00	-60.00	1990
KR-302	205940.00	6977686.00	2.00	33.10	276.00	-60.00	1990

Criteria

Commentary

Hole_ID	East	North	RL	Depth	Azimuth_GRID	Dip	Year
KR-303	205904.00	6977730.00	2.00	21.10	276.00	-60.00	1990
KR-304	205941.00	69777354.00	2.00	40.35	276.00	-60.00	1990
KR-305	206774.60	6977735.05	4.29	97.80	274.98	-45.08	2024
KR-306	206808.43	6978261.97	11.98	249.00	273.58	-66.42	2024
KR-307	206933.16	6977551.05	2.85	226.60	96.96	-53.29	2024
KR-308	206931.84	6977551.19	2.64	116.00	265.66	-80.06	2024
KR-309	207216.24	6977420.65	5.54	192.30	276.18	-68.70	2024
KR-310	207280.02	6977662.59	7.04	150.20	0.00	-90.00	2024
KR-HAGGVIK	207252.48	6978116.81	3.00	20.26	360.00	-90.00	1953
MU-1	202897.62	6977653.54	2.09	149.80	185.30	-60.00	1971
MU-2	202894.46	6977619.67	1.68	100.80	185.30	-59.60	1971
MU-3	203006.85	6977639.31	2.44	100.30	185.30	-58.70	1971
MU-4	202799.81	6977628.51	1.07	119.80	230.30	-60.80	1971
SO-001	206794.72	6977936.29	-183.94	50.27	96.18	30.05	1961
SO-003	206791.97	6977909.63	-118.18	32.50	96.30	0.00	1960
SO-004	206791.42	6977909.68	-117.18	16.87	93.98	44.83	1960
SO-005	206777.08	6977936.10	-118.98	38.70	93.20	0.00	1960
SO-006	206775.75	6977936.21	-116.10	25.37	94.95	44.74	1960
SO-007	206763.90	6977937.00	-96.09	6.51	183.38	0.00	1960
SO-008	206767.93	6977936.70	-96.01	26.22	85.97	0.00	1960
SO-009	206766.07	6977937.41	-95.19	25.17	50.80	42.75	1960
SO-010	206747.20	6977905.85	-59.84	21.25	275.30	-45.00	1960
SO-011	206751.03	6977905.49	-59.85	25.77	0.00	-90.00	1960
SO-012	206735.60	6977789.84	-52.80	31.00	97.17	0.00	1960
SO-013	206734.31	6977790.02	-51.56	30.12	93.52	45.55	1960
SO-014	206772.58	6977836.14	-54.00	51.56	0.00	-90.00	1960
SO-015	206757.64	6977837.54	-54.00	25.09	275.30	-45.00	1960
SO-016	206770.57	6977836.33	-54.15	33.79	275.30	-64.25	1961
SO-017	206723.24	6977765.28	-53.06	40.29	95.37	0.00	1961
SO-018	206750.23	6977963.90	-94.09	37.56	0.00	90.00	1961
SO-019	206751.68	6977963.71	-94.08	30.92	97.43	45.19	1961
SO-020	206756.09	6977963.55	-96.04	39.43	94.05	0.00	1961
SO-021	206722.86	6977765.35	-51.83	35.37	95.17	44.00	1961
SO-022	206764.13	6977912.39	-96.57	36.88	94.47	0.00	1961
SO-023	206771.96	6977963.11	-117.14	41.13	94.33	0.00	1961
SO-024	206763.49	6977912.94	-95.46	26.08	97.30	45.00	1961
SO-025	206771.20	6977963.18	-116.58	25.01	92.38	47.35	1961
SO-026	206768.16	6977886.80	-96.29	42.82	94.92	0.00	1961
SO-027	206774.00	6977934.57	-116.39	34.34	88.22	71.77	1961
SO-028	206767.38	6977886.90	-95.26	26.92	94.25	45.05	1961
SO-029	206768.18	6977887.40	-97.10	72.87	94.09	-27.94	1961
SO-030	206766.14	6977887.68	-94.99	41.89	270.85	63.15	1961
SO-031	206808.42	6977900.66	-120.09	38.58	0.00	-90.00	
SO-032	206807.11	6977900.85	-120.40	29.00	275.30	-47.45	
SO-033	206759.25	6977937.61	-94.18	12.00	0.00	90.00	
SO-034	206742.12	6977988.39	-54.08	46.22	0.00	-90.00	
SO-035	206745.06	6977988.07	-52.50	33.80	103.30	0.00	
SO-036	206742.89	6977989.66	-53.80	46.09	92.78	-73.65	
SO-037	206714.74	6977892.00	-33.63	21.12	98.68	31.23	1961
SO-038	206721.55	6977991.42	-51.94	25.85	89.83	59.37	
SO-039	206714.73	6977866.82	-33.17	37.18	96.02	32.58	
SO-040	206709.25	6977909.44	-33.35	10.14	0.00	90.00	
SO-041	206705.35	6977917.69	-33.33	10.21	0.00	90.00	
SO-042	206753.02	6977862.90	-51.80	10.25	95.30	30.00	
SO-043	206751.92	6977862.99	-51.08	8.45	95.30	70.00	
SO-044	206753.07	6977862.87	-53.34	19.37	95.30	-20.73	
SO-045	206751.60	6977863.02	-54.00	29.11	0.00	-90.00	
SO-046	206750.31	6977863.18	-53.98	24.26	275.30	-50.77	
SO-047	206750.88	6977885.79	-54.41	20.08	275.30	-50.00	1961
SO-048	206751.65	6977885.64	-54.41	6.02	0.00	-90.00	
SO-049	206729.27	6977790.30	-51.74	30.63	89.02	63.75	1961
SO-050	206755.28	6977812.04	-52.34	10.10	95.30	0.00	
SO-051	206753.20	6977812.28	-53.86	21.87	0.00	-90.00	
SO-052	206730.12	6977840.21	-51.38	25.15	94.88	31.63	
SO-053	206707.98	6977792.00	-33.26	34.67	94.20	30.85	1961
SO-054	206708.38	6977817.02	-33.27	28.95	93.42	30.63	
SO-055	206713.40	6977840.74	-34.12	33.48	93.62	2.72	1961
SO-056	206710.67	6977841.07	-33.06	31.57	94.12	38.88	1961
SO-057	206711.00	6977942.43	-33.78	11.84	274.23	0.00	1961
SO-058	206712.50	6977942.32	-35.28	12.79	0.00	-90.00	1961
SO-059	206712.52	6977942.27	-32.09	11.95	0.00	90.00	1961
SO-060	206710.16	6977967.97	-32.68	15.48	0.00	90.00	1961
SO-061	206794.24	6977935.01	-182.82	55.59	95.30	70.00	1961
SO-062	206708.26	6977804.99	-34.08	39.42	95.30	0.00	1961
SO-066	206708.97	6977829.75	-34.30	31.65	96.65	0.79	1961
SO-069	206759.72	6977938.36	-94.92	29.20	95.30	60.98	1961
SO-072	206800.83	6977939.17	-182.85	50.41	95.30	57.00	1961
SO-073	206788.09	6977960.58	-177.96	59.60	97.85	67.49	1961
SO-074	206819.95	6977940.48	-184.16	64.64	96.77	0.08	1961
SO-075	206820.01	6977940.55	-182.94	43.62	94.27	35.07	1961
SO-076	206788.55	6977960.52	-178.59	57.50	98.37	34.16	1961
SO-077	206788.98	6977960.44	-179.69	96.10	98.27	0.38	1961
SO-079	206783.92	6977985.43	-179.06	72.77	95.42	29.00	1961
SO-080	206784.11	6977985.39	-179.72	99.55	96.43	-2.15	1961
SO-081	206791.84	6977909.03	-178.81	60.47	93.49	59.47	
SO-082	206792.30	6977908.91	-178.95	73.94	92.63	26.60	
SO-083	206792.51	6977908.90	-179.58	96.62	99.18	-1.00	1961
SO-084	206792.07	6977884.61	-178.83	77.70	91.45	51.25	1961
SO-085	206792.47	6977884.57	-179.20	71.80	93.10	25.77	1961
SO-086	206792.26	6977884.55	-180.15	90.00	93.78	0.60	1961
SO-088	206781.40	6978011.06	-178.52	76.80	97.23	34.70	1961
SO-089	206781.64	6978011.08	-179.66	109.80	96.40	0.00	1961
SO-094	206792.12	6977908.97	-178.73	60.90	98.28	43.82	
SO-095	206792.34	6977908.92	-179.35	91.00	98.62	14.32	1961
SO-099	206719.76	6977765.60	-54.08	151.44	275.30	-45.00	1964
SO-100	206755.20	6977905.10	-73.14	20.09	95.34	45.00	1964
SO-101	206743.87	6977964.45	-72.60	30.50	95.30	0.00	1964
SO-102	206745.78	6977976.83	-72.80	30.13	95.30	0.00	1964
SO-103	206747.18	6977983.74	-74.00	26.39	95.30	0.00	1964
SO-104	206755.22	6977905.10	-74.09	21.06	95.30	0.00	1964

Criteria Commentary

Hole_ID	East	North	RL	Depth	Azimuth_GRID	Dip	Year
SO-106	206758.63	6977837.44	-66.25	15.05	95.30	0.00	1965
SO-107	206752.78	6977850.05	-68.80	29.88	95.30	0.00	1965
SO-108	206751.00	6977863.28	-68.80	30.55	95.30	0.00	1965
SO-109	206752.12	6977875.24	-69.00	29.36	95.30	0.00	1965
SO-110	206708.48	6977817.01	-34.00	39.22	95.30	0.00	1965
SO-111	206709.94	6977854.06	-34.25	40.32	95.30	0.00	1965
SO-113	206727.09	6977865.52	-34.80	30.75	95.30	0.00	1965
SO-114	206710.27	6977879.15	-34.80	40.01	95.30	0.00	1965
SO-116	206726.43	6977890.70	-33.25	25.00	95.30	0.00	1965
SO-117	206723.87	6977927.13	-35.00	25.00	95.30	0.00	1965
SO-118	206715.52	6977913.83	-35.00	34.70	95.30	0.00	1965
SO-119	206715.32	6977916.87	-33.55	35.20	95.34	45.18	
SO-120	206726.70	6978041.43	-51.00	20.25	95.30	45.00	1965
SO-121	206824.24	6977969.50	-150.50	15.40	95.30	0.00	1965
SO-122	206820.26	6977969.87	-150.50	27.65	275.30	0.00	1965
SO-123	206725.91	6978016.38	-51.05	20.05	95.34	44.50	
SO-124	206719.44	6977941.61	-52.42	14.60	95.30	45.00	
SO-125A	206824.68	6977981.01	-151.00	6.70	95.30	0.00	1965
SO-125B	206824.68	6977981.01	-151.00	40.60	95.30	0.00	1965
SO-126	206719.16	6977941.64	-52.37	30.10	95.34	45.49	
SO-127	206728.11	6977890.54	-52.06	17.60	95.34	45.24	1965
SO-128	206732.52	6977814.76	-51.77	30.00	95.34	45.36	
SO-129A	206821.33	6977981.33	-151.00	10.80	275.30	0.00	1965
SO-129B	206821.33	6977981.33	-151.00	30.00	275.30	0.00	1965
SO-130	206820.13	6977957.21	-150.50	47.25	275.30	0.00	1965
SO-131	206823.73	6977957.17	-150.50	35.25	95.30	0.00	1965
SO-132	206819.92	6977944.78	-150.20	30.05	275.30	0.00	1965
SO-133	206828.89	6977943.94	-150.20	24.45	95.30	0.00	1965
SO-134	206818.49	6977897.17	-151.00	10.25	275.30	0.00	1965
SO-134B	206818.49	6977897.17	-151.00	30.35	275.30	0.00	1965
SO-135	206822.06	6977898.85	-150.90	40.10	95.30	0.00	1965
SO-136	206824.40	6977906.67	-150.70	30.00	95.30	0.00	1965
SO-137	206823.61	6977906.74	-150.06	25.00	95.30	45.23	
SO-138	206824.19	6977906.69	-151.60	33.75	95.30	-30.00	
SO-139	206820.41	6977907.04	-150.70	19.50	275.30	0.00	1965
SO-141	206825.07	6977919.16	-151.00	11.55	95.30	0.00	1965
SO-141B	206825.07	6977919.16	-150.70	34.60	95.30	0.00	1965
SO-143	206825.07	6977919.17	-151.25	31.90	95.30	-30.00	1965
SO-144	206826.23	6977931.62	-150.70	28.05	95.30	0.00	1965
SO-145	206823.74	6977931.86	-150.50	30.00	275.30	0.00	1965
SO-146	206822.12	6977898.84	-149.32	18.70	95.30	45.00	
SO-147	206821.66	6977898.89	-151.30	34.50	95.30	-30.00	1965
SO-148	206819.63	6977899.08	-149.48	31.50	275.30	45.00	
SO-149	206827.25	6977931.53	-151.60	31.80	95.34	-35.00	
SO-150	206822.01	6977982.27	-149.54	34.75	275.30	20.00	
SO-151	206822.15	6977981.87	-149.01	45.10	268.59	45.00	
SO-153	206821.59	6977981.80	-150.96	34.55	272.98	-30.00	
SO-155	206823.73	6977957.13	-149.01	25.15	93.82	45.00	1966
SO-156	206820.07	6977956.61	-151.55	23.90	279.00	-30.00	1966
SO-157	206821.49	6977882.01	-150.58	29.40	96.11	0.00	1966
SO-158	206821.16	6977882.06	-149.59	25.00	97.66	45.00	1966
SO-159	206818.06	6977881.92	-150.66	24.35	275.55	0.00	1966
SO-160	206818.09	6977882.14	-149.20	20.10	275.30	45.00	1966
SO-161	206781.97	6977904.12	-120.45	42.70	81.67	-20.00	
SO-162	206779.59	6977903.20	-120.18	45.50	95.75	-20.00	
SO-163	206779.47	6977901.98	-119.71	42.00	124.24	-20.00	1966
SO-164	206767.57	6977987.16	-118.47	41.35	93.79	-22.00	
SO-165	206770.03	6977974.58	-118.46	41.65	93.88	-22.00	
SO-166	206772.36	6977962.08	-118.54	40.45	94.94	-22.00	1966
SO-167	206781.75	6978049.11	-118.62	41.35	93.72	-22.00	
SO-168	206787.34	6977910.14	-181.30	50.85	275.30	-45.00	1966
SO-169	206778.71	6978011.06	-180.76	64.80	275.30	-45.00	1966
SO-170	206782.73	6977960.82	-181.20	65.50	275.30	-45.00	1966
SO-171	206650.54	6977922.92	-183.70	44.70	95.30	45.00	1966
SO-172	206826.11	6978019.07	-150.25	26.55	275.30	0.00	1966
SO-174	206829.85	6978018.72	-150.25	30.00	95.30	0.00	1966
SO-176	206824.70	6978007.14	-150.48	28.30	275.30	0.00	1966
SO-177	206825.21	6978007.09	-149.76	40.40	275.30	30.00	
SO-178	206828.13	6978006.82	-150.30	31.45	95.30	0.00	1966
SO-179	206827.83	6978006.85	-149.71	29.90	95.30	30.00	
SO-180	206826.57	6977994.41	-150.25	30.50	95.30	0.00	1966
SO-182	206823.08	6977994.73	-150.25	30.10	275.30	0.00	1966
SO-184	206728.92	6977766.85	-32.50	10.20	275.30	0.00	1966
SO-185	206731.91	6977766.57	-32.70	20.35	95.30	0.00	1966
SO-186	206729.93	6977777.61	-33.00	25.70	95.30	0.00	1967
SO-187	206725.58	6977790.28	-33.00	30.10	95.30	0.00	1967
SO-188	206762.59	6977903.40	-120.00	100.60	134.76	0.00	1968
SO-189	206763.78	6977903.29	-120.00	61.41	114.93	0.00	1968
SO-190	206761.88	6977862.24	-96.66	45.61	95.34	0.00	
SO-193	206771.02	6977996.18	-119.00	34.89	88.52	0.00	
SO-194	206770.59	6977997.11	-119.00	42.67	54.75	0.00	
SO-195	206770.17	6977997.42	-119.00	62.06	33.45	0.00	
SO-196	206624.39	6977917.33	-186.25	166.85	275.30	-45.00	1968
SO-197	206650.30	6977914.91	-60.25	152.15	275.30	-45.00	1968
SO-896	206730.51	6977826.96	-53.63	30.60	96.62	1.73	
SO-897	206727.38	6977929.63	-54.02	33.13	95.00	1.22	
SO-898	206730.04	6977915.54	-53.76	29.53	95.45	30.75	

Data aggregation
methods

A minimum sample length is 1m except at the bottom of the holes wherever possible the original surface till was samples separately to the tailings.

Criteria	Commentary
<i>Relationship between mineralisation widths and intercept lengths</i>	All holes were drilled either vertical or east azimuth. And given the vast bulk of pierce points are on structure dipping 45 degrees East with generally shallower dip zones to the East result in some non-orthogonal intercepts.
<i>Diagrams</i>	The location and results received for surface samples are displayed in the attached maps and/or tables. Coordinates are ETRS-TM35FIN projection (EPSG:3067). Figures 3 onwards depict hole locations.
<i>Balanced reporting</i>	Histograms of assay values used in the modelling are reported which include the full range of values.
<i>Further work</i>	Metallurgical test work is planned in the first instance before any further drilling. Additional assays are due and the company will await the full currently outstanding sample suite of approximately 900 samples that are being processes at report date.

Section 3 Estimation and Reporting of Mineral Resources

Criteria	Commentary																																																																																																																																													
Mineral tenement and land tenure status	<p>Prospech Limited has 100% interest in Bambra Oy (‘Bambra’), a company incorporated in Finland.</p> <p>The laws of Finland relating to exploration and mining have various requirements. As the exploration advances specific filings and environmental or other studies may be required. There are ongoing requirements under Finnish mining laws that will be required at each stage of advancement. Those filings and studies are maintained and updated as required by Prospech’s environmental and permit advisors specifically engaged for such purposes.</p> <p>The Company is the manager of operations in accordance with generally accepted mining industry standards and practices. The Korsnäs project’s tenure is secured by Exploration Permit Application Number ML2021:0019 Hägg and Reservation Notifications VA2023:0040 Hägg 2, VA2023:0083 Hägg 3 and VA2023:0093 Petalax.</p>																																																																																																																																													
Exploration done by other parties	The area of Korsnäs has been mapped, glacial till boulder sampled and drilled by private companies including and Outokumpu Oy.																																																																																																																																													
Database Integrity	<p>All data was imported into Micromine software. The database was validated using specific processes to verify the existence of the errors including:</p> <p>No assays present in the assay database but present in the collar file (this was common as most holes assayed for lead only.</p> <p>No survey file present – most holes were measured from drafted sections to interpret dip hence the need for the 2024 program to confirm structural interpretations.</p>																																																																																																																																													
Site Visits	Prospech personnel have been operating at the project site since April 2023.																																																																																																																																													
Dimensions	<p>The mineral resource is spread across 46 separate block model zones as depicted in the body of the text in Figure 4.</p> <table><tr><th>Domain Name</th><th>Dip Direction</th><th>Dip</th></tr><tr><td>KR005</td><td>95</td><td>39</td></tr><tr><td>KR027_026</td><td>95</td><td>30</td></tr><tr><td>KR028_024</td><td>95</td><td>45</td></tr><tr><td>KR058_017</td><td>95</td><td>47</td></tr><tr><td>KR062_036</td><td>95</td><td>21</td></tr><tr><td>KR062_192</td><td>95</td><td>20</td></tr><tr><td>KR064</td><td>95</td><td>64</td></tr><tr><td>KR093_214</td><td>95</td><td>25</td></tr><tr><td>KR095</td><td>95</td><td>34</td></tr><tr><td>KR101</td><td>95</td><td>36</td></tr><tr><td>KR104</td><td>95</td><td>37</td></tr><tr><td>KR111_1132</td><td>95</td><td>5</td></tr><tr><td>KR111_126</td><td>95</td><td>19</td></tr><tr><td>KR118</td><td>95</td><td>30</td></tr><tr><td>KR120</td><td>95</td><td>39</td></tr><tr><td>KR139_156</td><td>95</td><td>27</td></tr><tr><td>KR142_229</td><td>95</td><td>34</td></tr><tr><td>KR181_182</td><td>95</td><td>24</td></tr><tr><td>KR181_182a</td><td>95</td><td>27</td></tr><tr><td>KR194</td><td>95</td><td>32</td></tr><tr><td>KR196</td><td>95</td><td>24</td></tr><tr><td>KR212_210</td><td>95</td><td>40</td></tr><tr><td>KR217_231</td><td>95</td><td>31</td></tr><tr><td>KR219_218</td><td>95</td><td>42</td></tr><tr><td>KR224</td><td>95</td><td>25</td></tr><tr><td>KR2249b</td><td>95</td><td>30</td></tr><tr><td>KR249a</td><td>95</td><td>38</td></tr><tr><td>KR251a</td><td>95</td><td>44</td></tr><tr><td>KR251b</td><td>95</td><td>48</td></tr><tr><td>KR259</td><td>95</td><td>39</td></tr><tr><td>KR259b</td><td>95</td><td>37</td></tr><tr><td>KR271a</td><td>95</td><td>43</td></tr><tr><td>KR271b</td><td>95</td><td>43</td></tr><tr><td>KR273a</td><td>95</td><td>35</td></tr><tr><td>KR281_034</td><td>95</td><td>32</td></tr><tr><td>KR281_095</td><td>95</td><td>41</td></tr><tr><td>KR282_297</td><td>95</td><td>19</td></tr><tr><td>KR283_284</td><td>95</td><td>45</td></tr><tr><td>KR286_306</td><td>95</td><td>35</td></tr><tr><td>KR288a</td><td>95</td><td>31</td></tr><tr><td>KR288b</td><td>95</td><td>32</td></tr><tr><td>KR292_SO196</td><td>95</td><td>37</td></tr><tr><td>KR295</td><td>95</td><td>40</td></tr><tr><td>KR297</td><td>95</td><td>13</td></tr><tr><td>KR308_136</td><td>95</td><td>17</td></tr><tr><td>KR308_307</td><td>95</td><td>27</td></tr></table>	Domain Name	Dip Direction	Dip	KR005	95	39	KR027_026	95	30	KR028_024	95	45	KR058_017	95	47	KR062_036	95	21	KR062_192	95	20	KR064	95	64	KR093_214	95	25	KR095	95	34	KR101	95	36	KR104	95	37	KR111_1132	95	5	KR111_126	95	19	KR118	95	30	KR120	95	39	KR139_156	95	27	KR142_229	95	34	KR181_182	95	24	KR181_182a	95	27	KR194	95	32	KR196	95	24	KR212_210	95	40	KR217_231	95	31	KR219_218	95	42	KR224	95	25	KR2249b	95	30	KR249a	95	38	KR251a	95	44	KR251b	95	48	KR259	95	39	KR259b	95	37	KR271a	95	43	KR271b	95	43	KR273a	95	35	KR281_034	95	32	KR281_095	95	41	KR282_297	95	19	KR283_284	95	45	KR286_306	95	35	KR288a	95	31	KR288b	95	32	KR292_SO196	95	37	KR295	95	40	KR297	95	13	KR308_136	95	17	KR308_307	95	27
Domain Name	Dip Direction	Dip																																																																																																																																												
KR005	95	39																																																																																																																																												
KR027_026	95	30																																																																																																																																												
KR028_024	95	45																																																																																																																																												
KR058_017	95	47																																																																																																																																												
KR062_036	95	21																																																																																																																																												
KR062_192	95	20																																																																																																																																												
KR064	95	64																																																																																																																																												
KR093_214	95	25																																																																																																																																												
KR095	95	34																																																																																																																																												
KR101	95	36																																																																																																																																												
KR104	95	37																																																																																																																																												
KR111_1132	95	5																																																																																																																																												
KR111_126	95	19																																																																																																																																												
KR118	95	30																																																																																																																																												
KR120	95	39																																																																																																																																												
KR139_156	95	27																																																																																																																																												
KR142_229	95	34																																																																																																																																												
KR181_182	95	24																																																																																																																																												
KR181_182a	95	27																																																																																																																																												
KR194	95	32																																																																																																																																												
KR196	95	24																																																																																																																																												
KR212_210	95	40																																																																																																																																												
KR217_231	95	31																																																																																																																																												
KR219_218	95	42																																																																																																																																												
KR224	95	25																																																																																																																																												
KR2249b	95	30																																																																																																																																												
KR249a	95	38																																																																																																																																												
KR251a	95	44																																																																																																																																												
KR251b	95	48																																																																																																																																												
KR259	95	39																																																																																																																																												
KR259b	95	37																																																																																																																																												
KR271a	95	43																																																																																																																																												
KR271b	95	43																																																																																																																																												
KR273a	95	35																																																																																																																																												
KR281_034	95	32																																																																																																																																												
KR281_095	95	41																																																																																																																																												
KR282_297	95	19																																																																																																																																												
KR283_284	95	45																																																																																																																																												
KR286_306	95	35																																																																																																																																												
KR288a	95	31																																																																																																																																												
KR288b	95	32																																																																																																																																												
KR292_SO196	95	37																																																																																																																																												
KR295	95	40																																																																																																																																												
KR297	95	13																																																																																																																																												
KR308_136	95	17																																																																																																																																												
KR308_307	95	27																																																																																																																																												

Criteria	Commentary
<i>Estimation and modelling techniques</i>	Covered in body of text in Tables 2 onwards. A search ellipse distributed grades by use of Inverse Distance Squared.
<i>Moisture</i>	All estimations are reported as dry tonnage
<i>Cut off Parameters</i>	<p>Cut-off parameters have been assessed by the Competent Person with consideration given to a number of material factors including, amongst other matters, the impact of the world and European geopolitical environment on future REE pricing and, given flatter dips confirmed by detailed structural studies completed by Prospech geologists based on the results from the recent drilling campaign completed by the Company, the potential for a partial open pit mining operation at Korsnäs.</p> <p>It is the Competent Person's opinion that, with more exploration and drilling, some amount of the Exploration Target is likely to be converted to a resource estimate. Further, the 46 separately block modelled zones will likely be consolidated to possibly less than 6 contiguous zones with a consequent increase in quality and quantity of the currently reported Inferred MRE.</p> <p>Based on the assumptions adopted by the Competent Person, a theoretical breakeven cut-off grade is indicated between 0.2% and 0.5% TREO.</p> <p>Given these uncertainties, the Competent Person considers that it is reasonable to classify the mineral resource estimate in the Inferred Category and use a cut-off grade of 0.5% TREO for summary reporting purposes of the Inferred MRE in this announcement.</p>
<i>Mining Factors or assumptions</i>	No specific mining method is assumed other than potentially the use of open pit and underground mining methods.
<i>Metallurgical Factors or assumptions</i>	<p>Currently the Company is aware the bulk of REE is hosted by the mineral Fluorapatite as a probable feedstock for nearby processing facilities in Europe so test work will focus on beneficiation of that material.</p> <p>Sample shipment of test work samples to GTK Mintec is to commence in early December and a program has been determined. Analysis of the following parameters was undertaken by Master Student Niel van de Kerkhof 2024 of KU Leuven "Investigating the Origin of REE Mineralisation in the Korsnäs Pb-REE deposit, Finland: Magmatic Carbonatite Dikes or Hydrothermal Veins?".</p> <p>Petrographic analysis Chemical assay data analysis Petrography Mineral chemistry Whole rock chemistry Cold cathodoluminescence microscopy (CL)</p> <p>In summary the dominant mineral species hosting rare earth elements is Fluorapatite $\text{Ca}_5(\text{PO}_4)_3\text{F}$ with subordinate Bastnaesite $((\text{La}, \text{Ce}, \text{Y})\text{CO}_3\text{F}$ and Monazite $(\text{Pr}, \text{Ce}, \text{Nd}, \text{Th})\text{PO}_4$ and trace Allanite $(\text{Ce}, \text{Ca}, \text{Y}, \text{La})_2(\text{Al}, \text{Fe}^{+3})_3(\text{SiO}_4)_3(\text{OH})$. Future metallurgical work as detailed will determine if, for example, a Calcium Fluorine product is possible apart from standard rare earth separation.</p>
<i>Environmental Factors or assumptions</i>	The Tailings Storage Facility (TSF) and the Lanthanide Concentrate Stockpile (LnCS) and the water filled pit in the mine are all under evaluation in terms of possible economic and environmental beneficiation.
<i>Bulk Density</i>	An SG of 2.7 is assigned given past production statistics. This will be refined with future estimates with SG test work to coincide with detailed metallurgical test work in early 2025.
<i>Classification</i>	<p>All Mineral Resources for the project have been classified as Inferred.</p> <p>The Competent Person is satisfied that the classification is appropriate based on the current drill hole spacing, geological and assay continuity and mineralogical consistency in spatially varied zones.</p>
<i>Audits or reviews</i>	As yet there have been no third party audits or reviews of the mineral resource estimate.
<i>Discussion of relative accuracy /confidence</i>	<p>The block model with interpolated grades was subject to visual and statistical verification. Histograms and probability graphs of the interpolated grades were built. These were compared to the same histograms of the composites grades.</p> <p>The mineral resource is a global resource estimate and locally resource estimates may vary in a negative or positive manner.</p>